



# Extensive Welcome: Three-way Threshold at Chinatown's Gate

## Citation

Ng, T.K. Justin. 2022. Extensive Welcome: Three-way Threshold at Chinatown's Gate. Master's thesis, Harvard Graduate School of Design.

## Permanent link

<https://nrs.harvard.edu/URN-3:HUL.INSTREPOS:37373987>

## Terms of Use

This article was downloaded from Harvard University's DASH repository, and is made available under the terms and conditions applicable to Other Posted Material, as set forth at <http://nrs.harvard.edu/urn-3:HUL.InstRepos:dash.current.terms-of-use#LAA>

## Share Your Story

The Harvard community has made this article openly available.  
Please share how this access benefits you. [Submit a story](#).

[Accessibility](#)

Extensive Welcome: Three-way Threshold at Chinatown's Gate

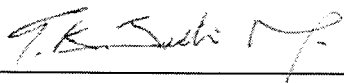
A Thesis Submitted to the Department of Architecture  
Harvard University Graduate School of Design, by

T.K. Justin Ng

In Partial Fulfillment of the Requirements for the Degree of  
[Master of Architecture]

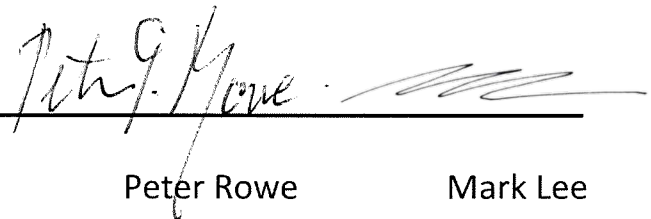
December 2022  
(Month and Year Thesis Submitted)

**"The author hereby grants Harvard University permission to reproduce and distribute copies of this thesis, in whole or in part, for educational purposes."**



---

Tsz Kit Justin Ng



---

Peter Rowe

Mark Lee

## Extensive Welcome: Three-way Threshold at Chinatown's Gate

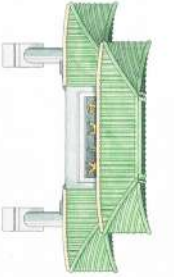
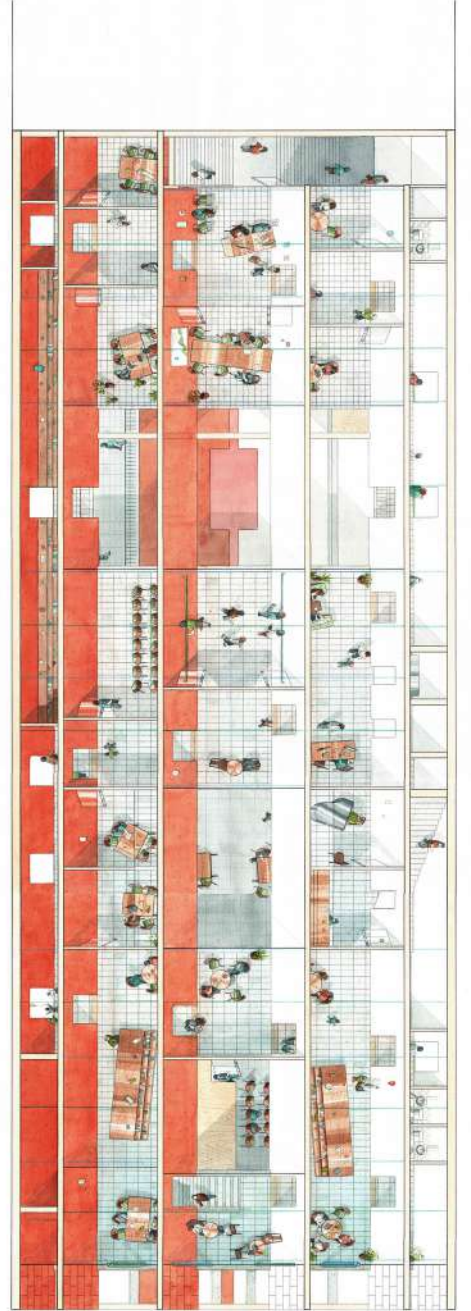
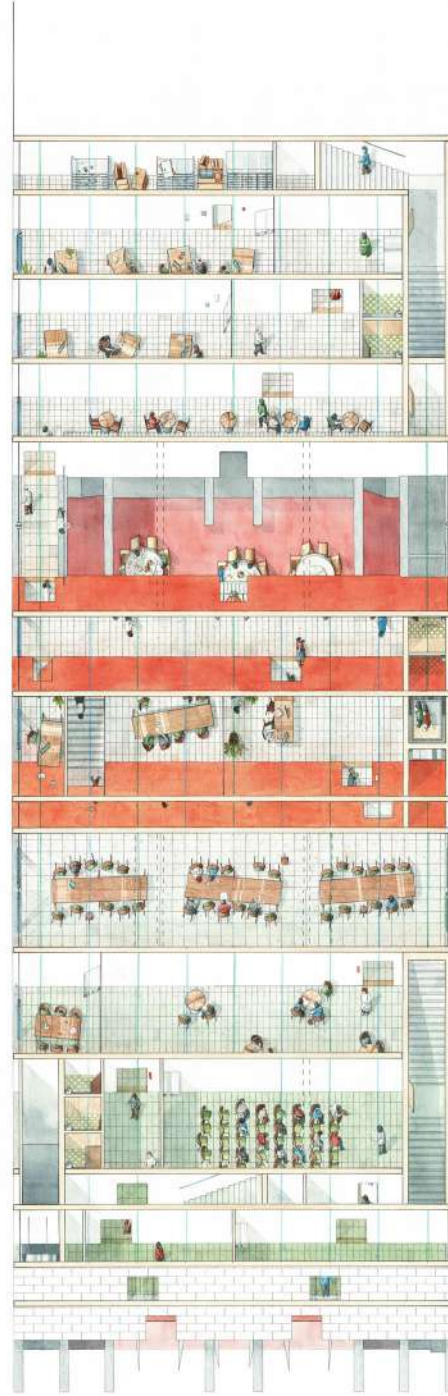
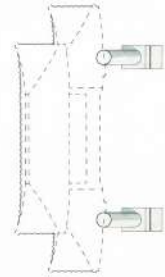
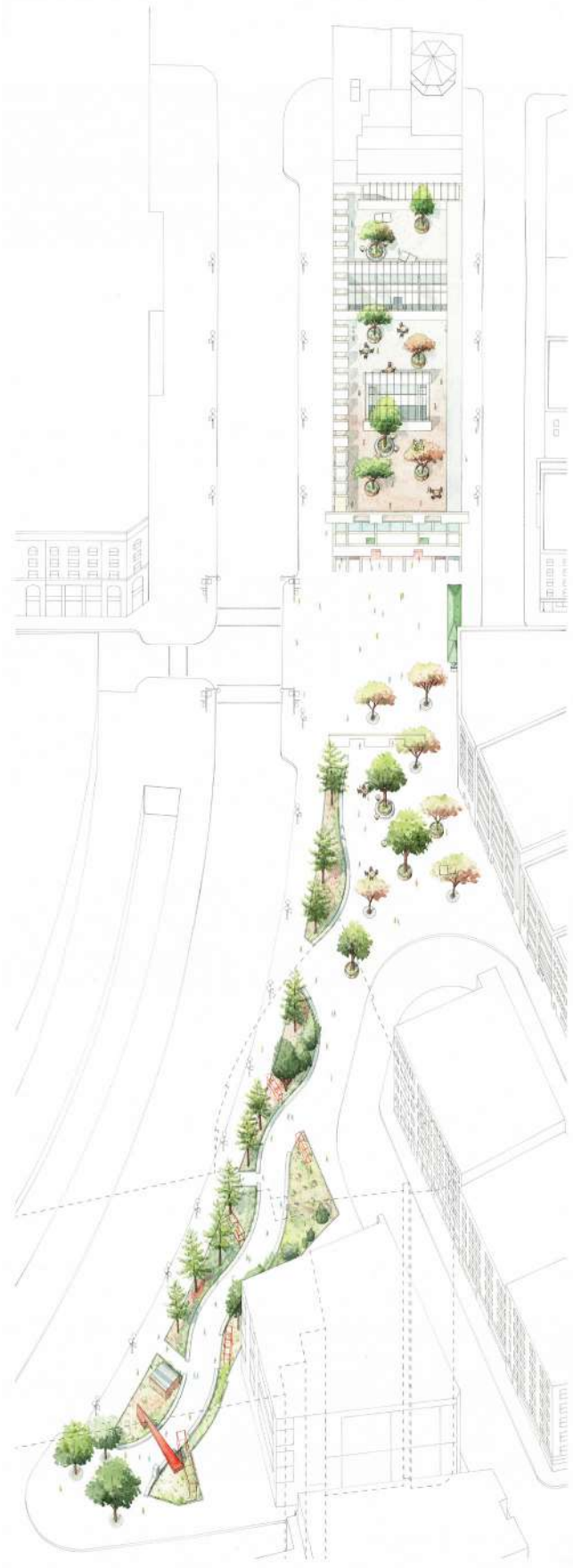
Benevolent Associations have helped Chinese immigrants settle in America for more than a century. Yet unlike missionaries intent on conversion, Benevolent Associations operate without the need to shed existing identities and beliefs. These Associations service immigrants' liminal state and teeter to fulfill Chinese and American expectations. In other words, Benevolent Associations see thresholds as hospitable conditions unto themselves.

This thesis considers a new space for Boston's Consolidated Benevolent Association through thresholds under urban, programmatic, and tectonic conditions.

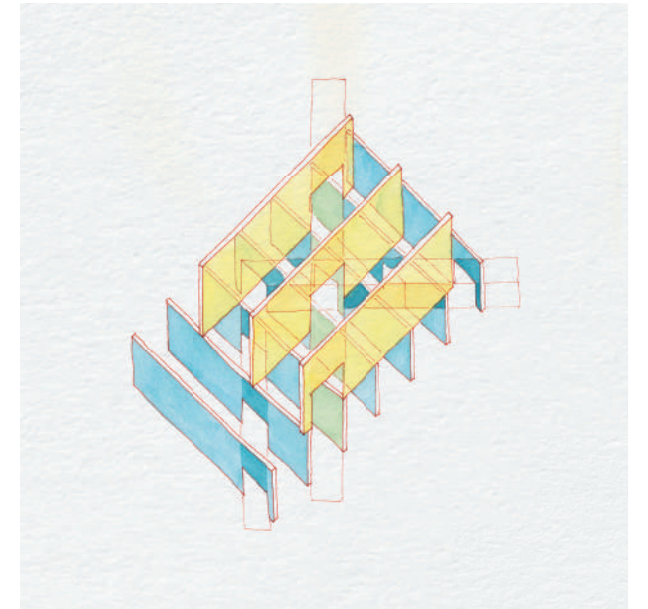
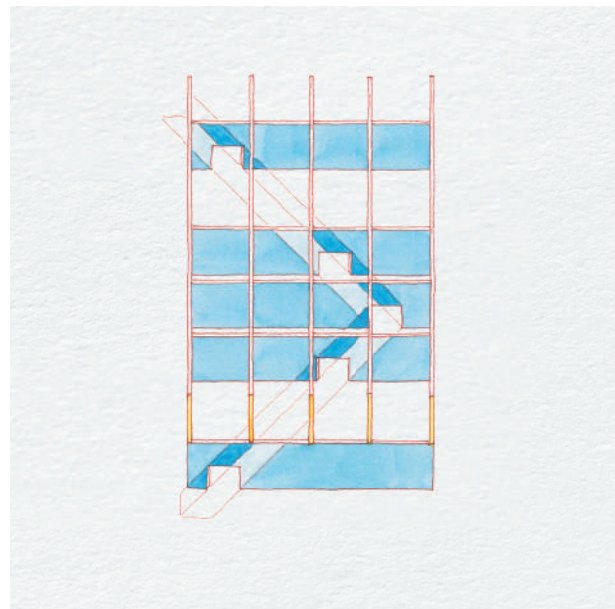
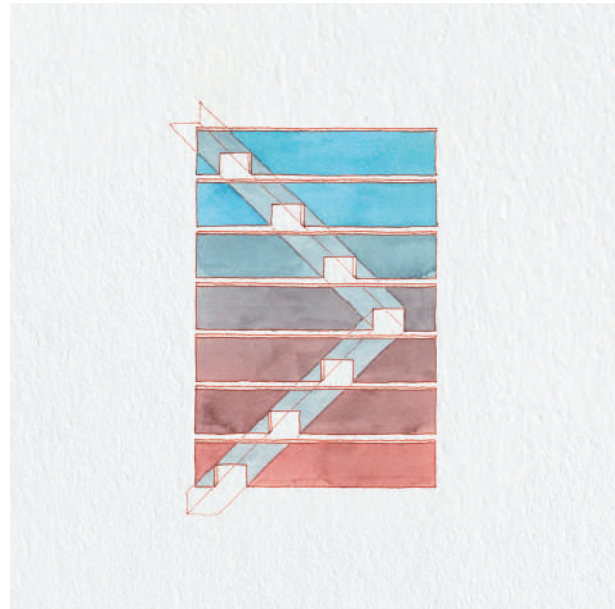
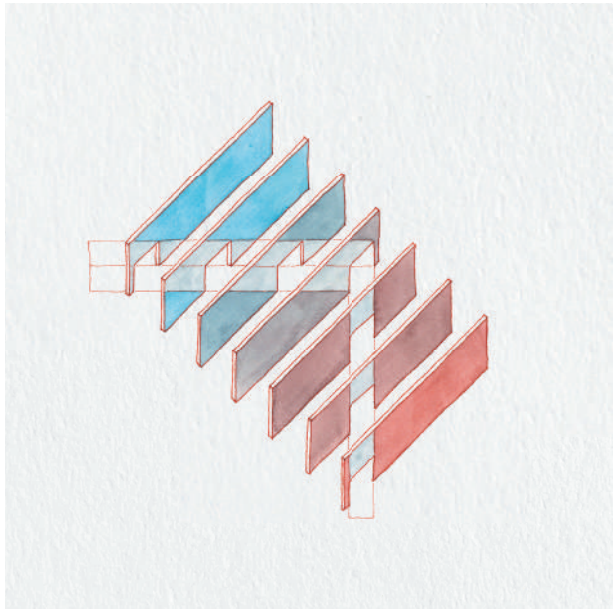
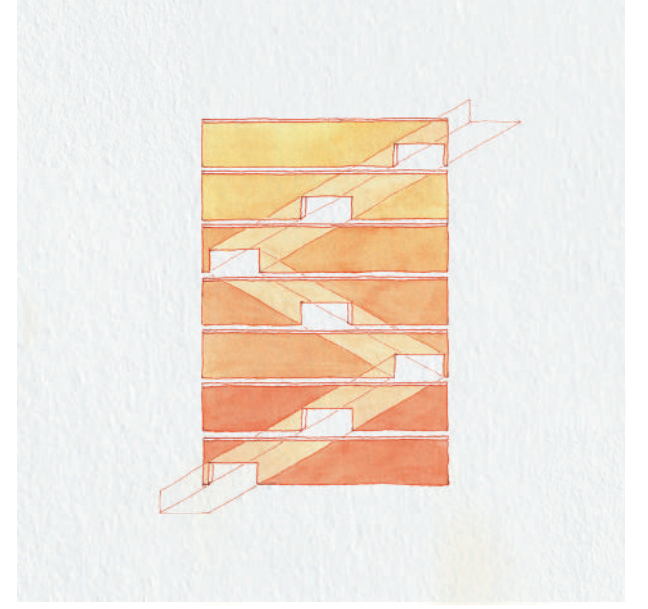
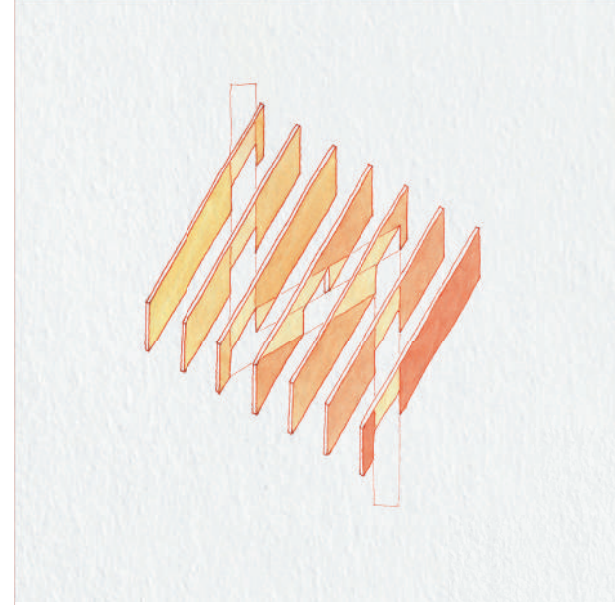
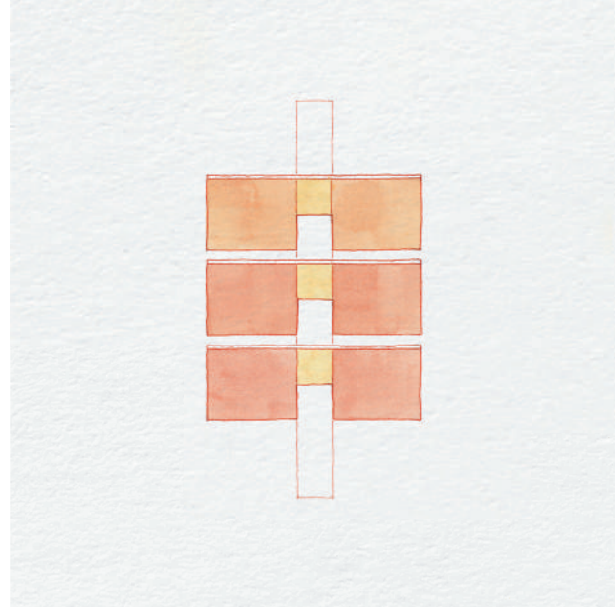
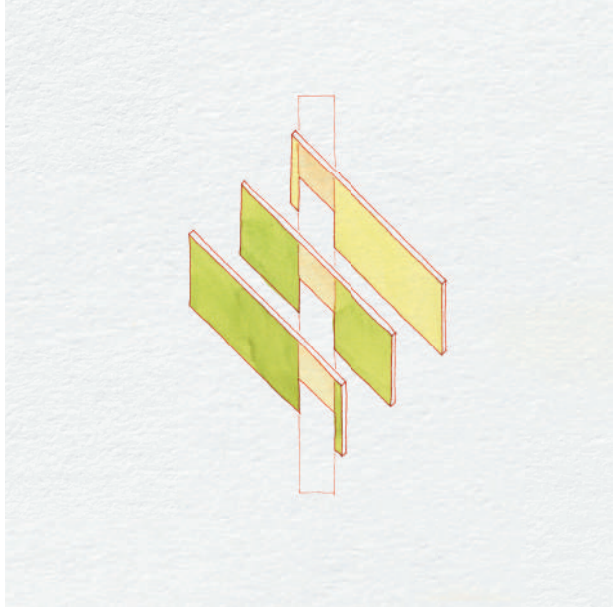
Straddling Chinatown's border, the structure reinforces the existing Chinatown gate while challenging its ostensible flatness. Paifangs are ritualistic gates. But arrayed as thresholds between precincts, they begin to produce depth in the oblique - or what Massimo Scolari calls the Chinese perspective. This tension between the flatness of a threshold and the rich spatial depth their arrangement produces is characteristic of Shan Shui paintings, where thresholds serpentine through mountains, presenting multiple vantages along a path.

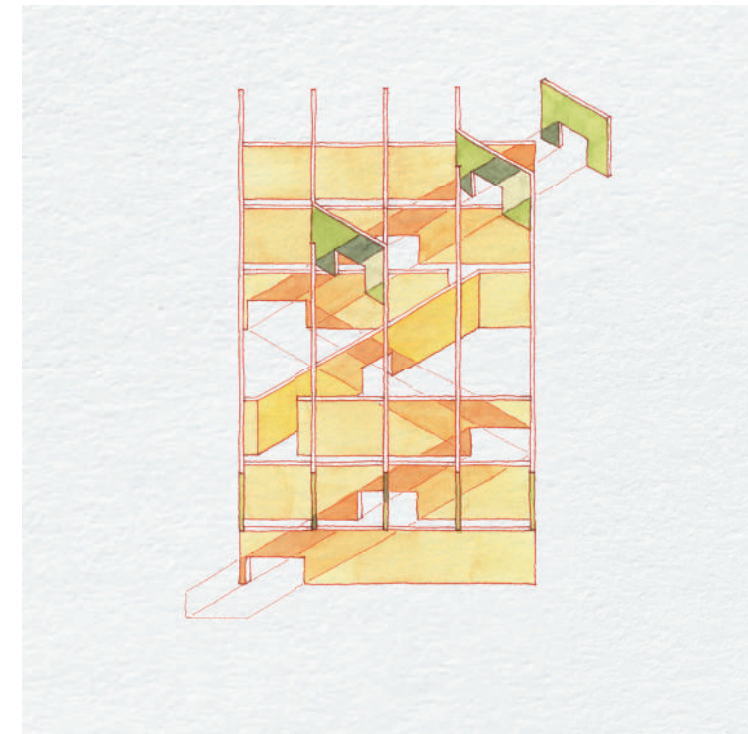
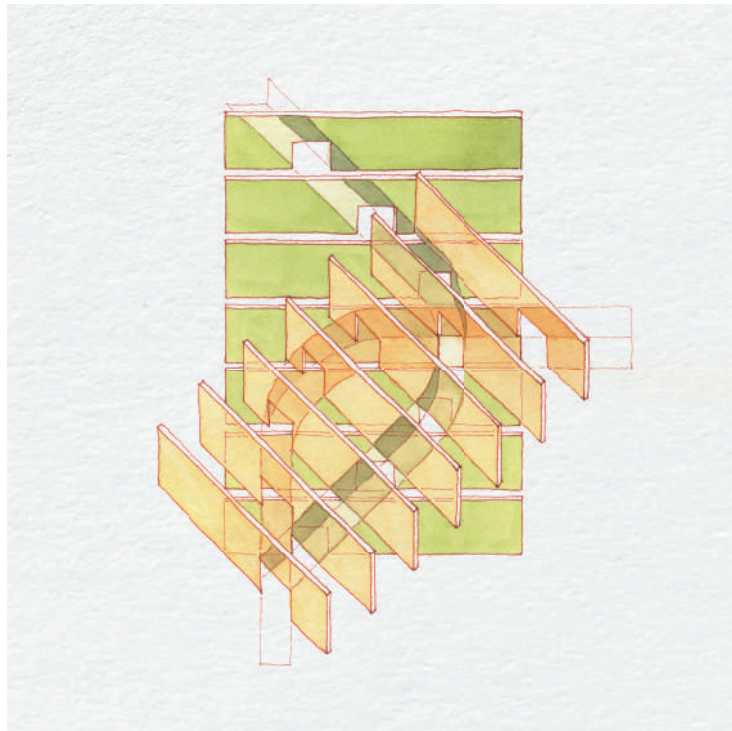
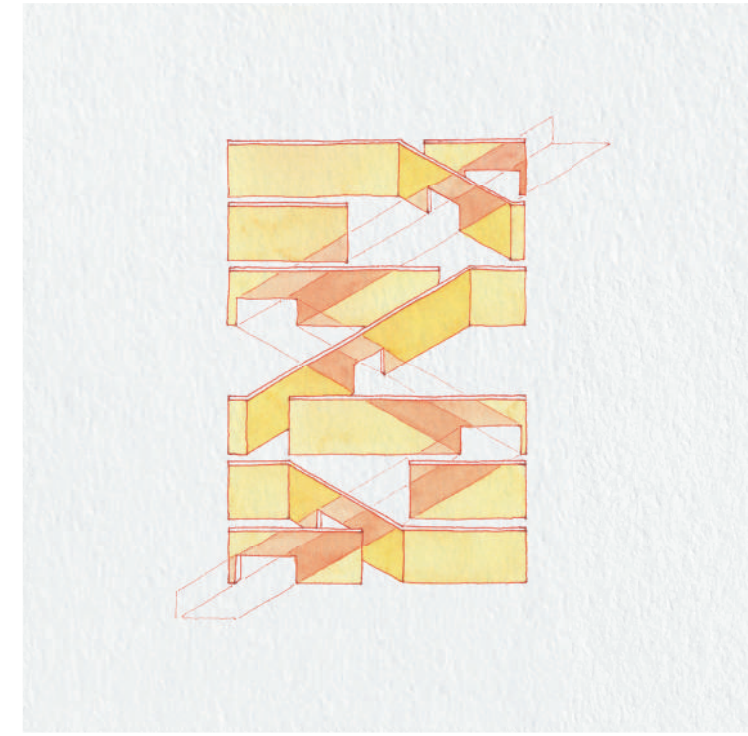
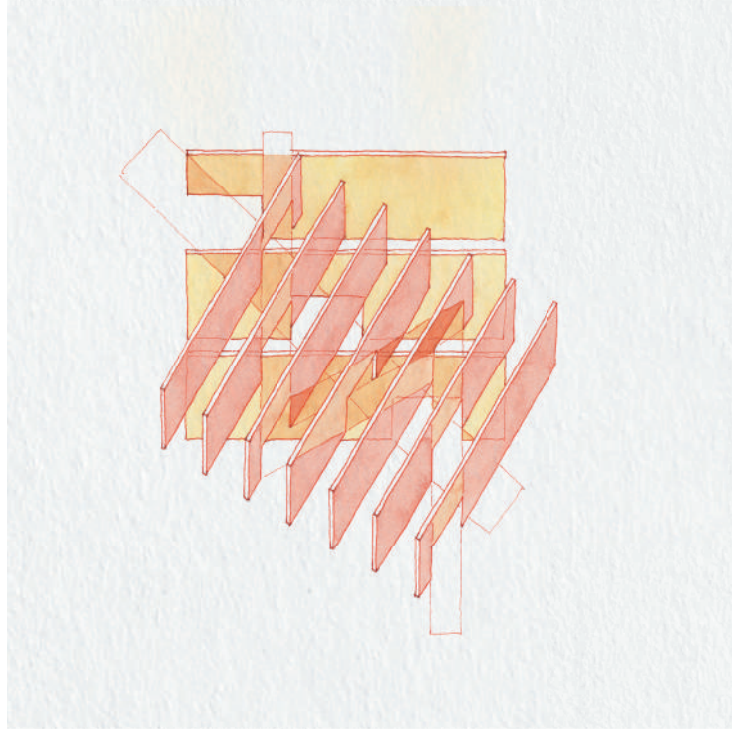
This spatial condition manifests as parallel walls with spaces in between. Meandering circulation punctures these walls to produce spatial depth in the oblique, which concludes at a roof garden vis-à-vis the Boston Greenway. Conceived as CLT blanks, cross-stacked, the structure accommodates varying bays that house the Association's diverse programming.

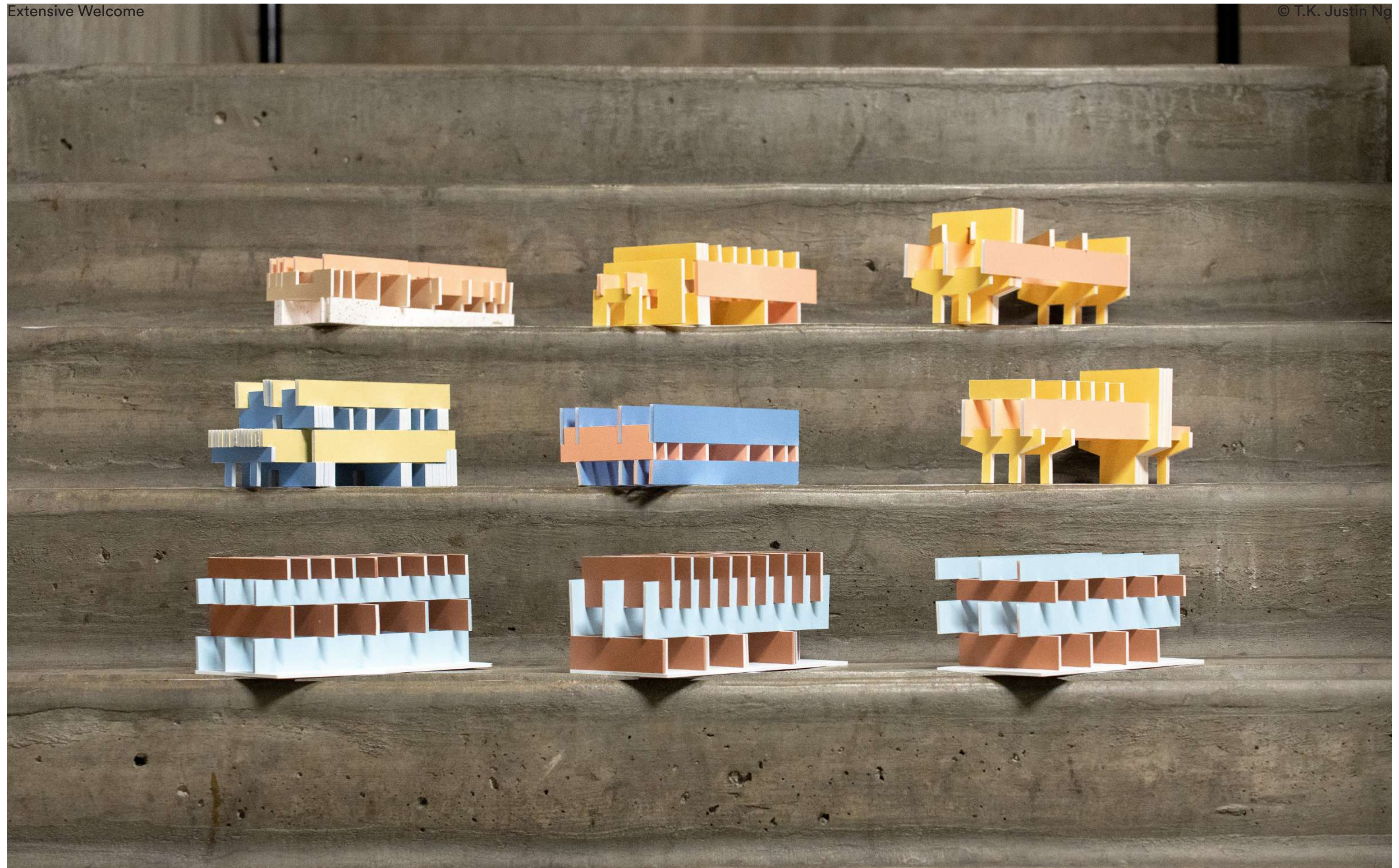
The resulting spaces push back on the open plan's promise of a melting pot - that belonging is best produced by smoothing over difference - to retain and contrast each space's character through a staccato of thresholds.



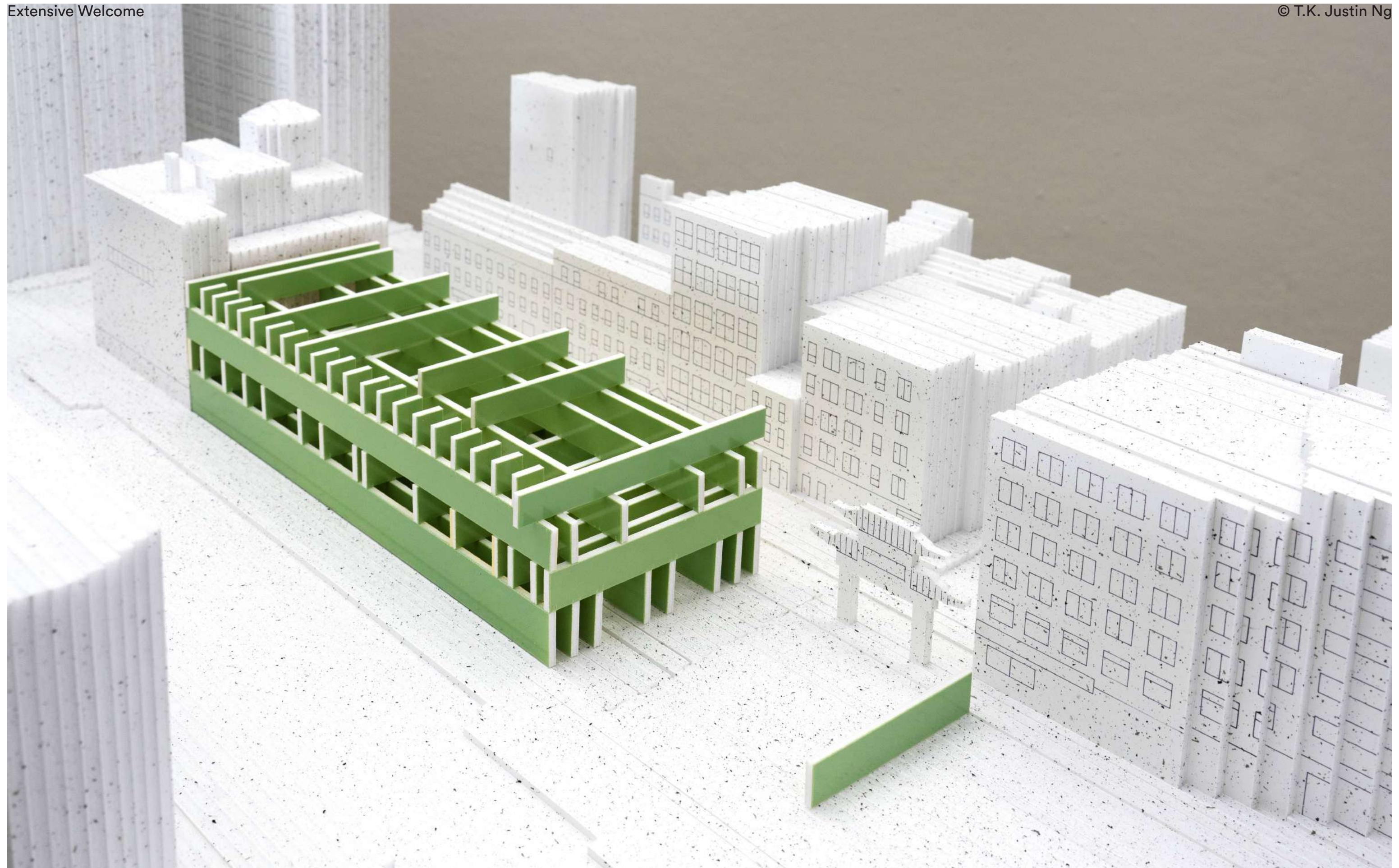


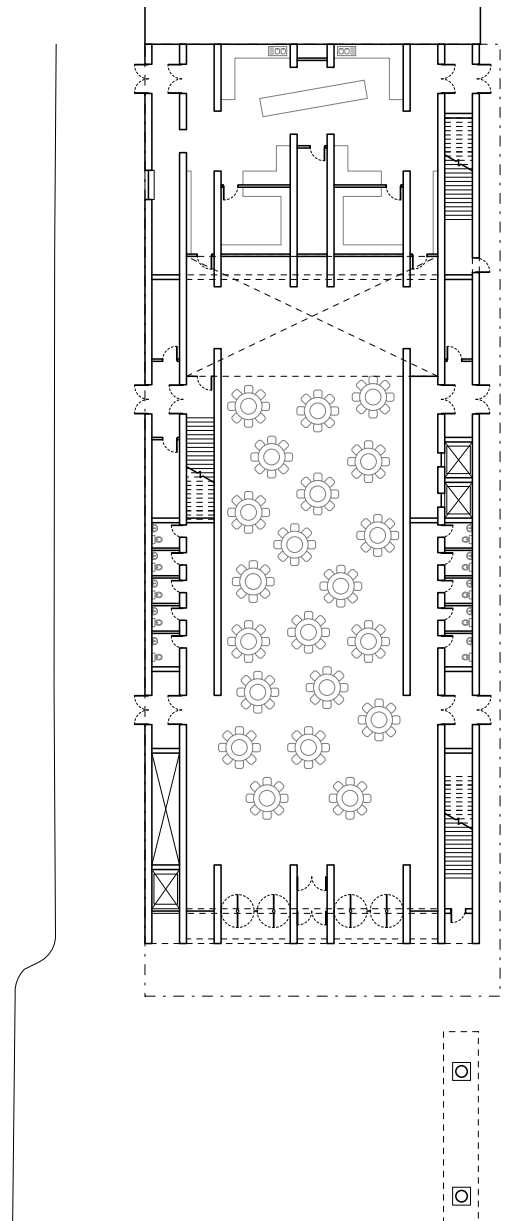




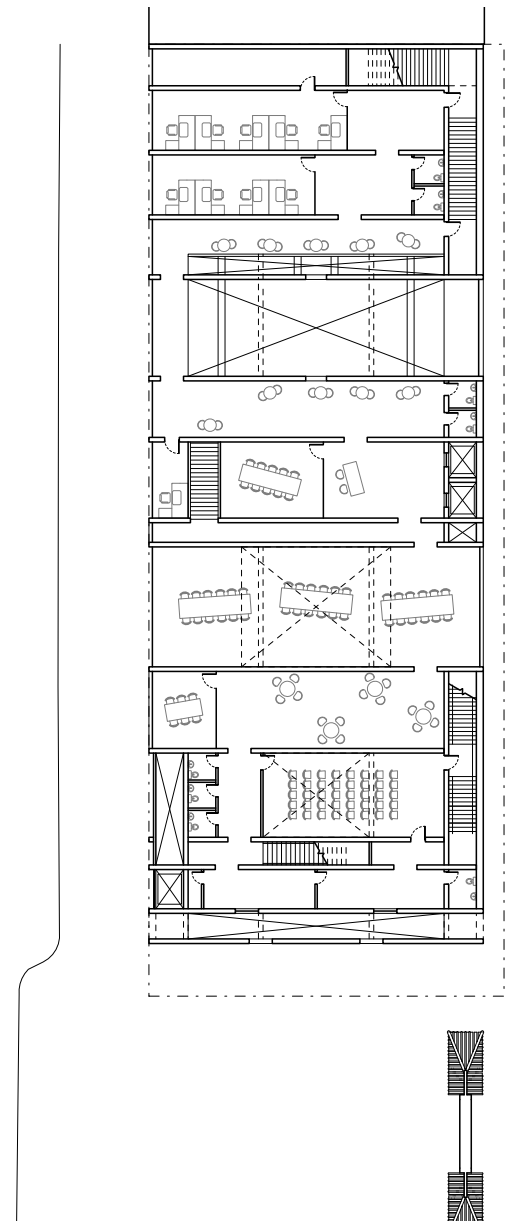




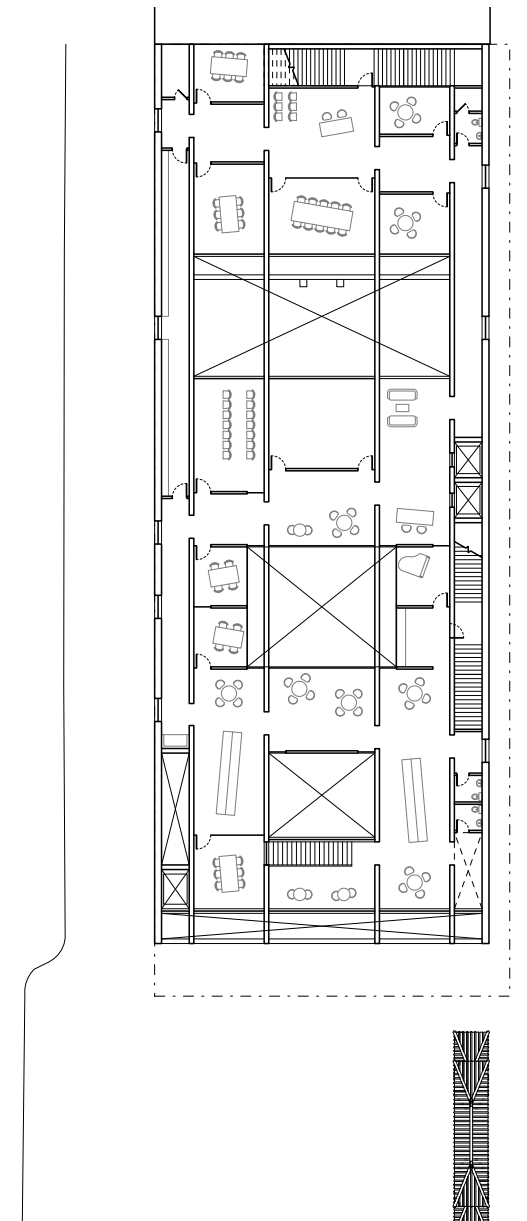




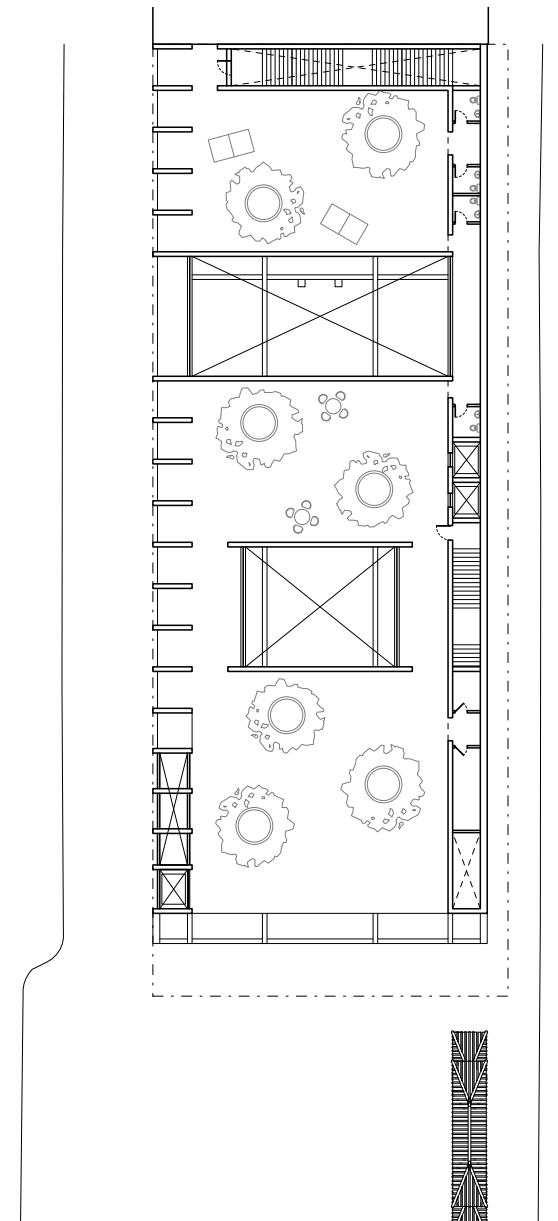
Ground Floor Plan



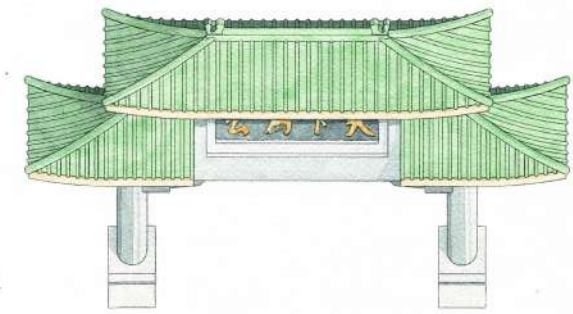
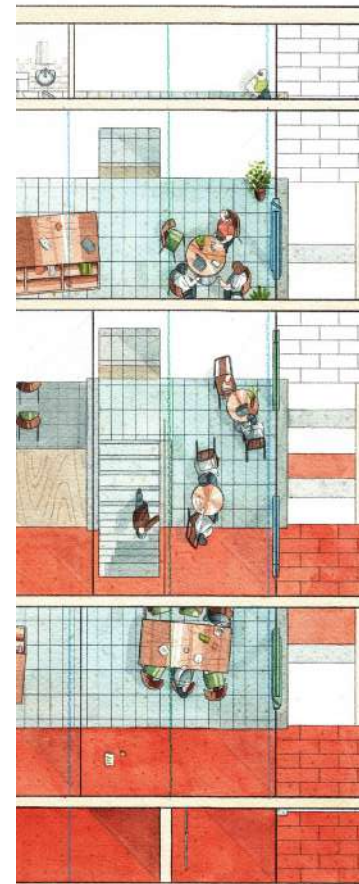
Second Floor Plan



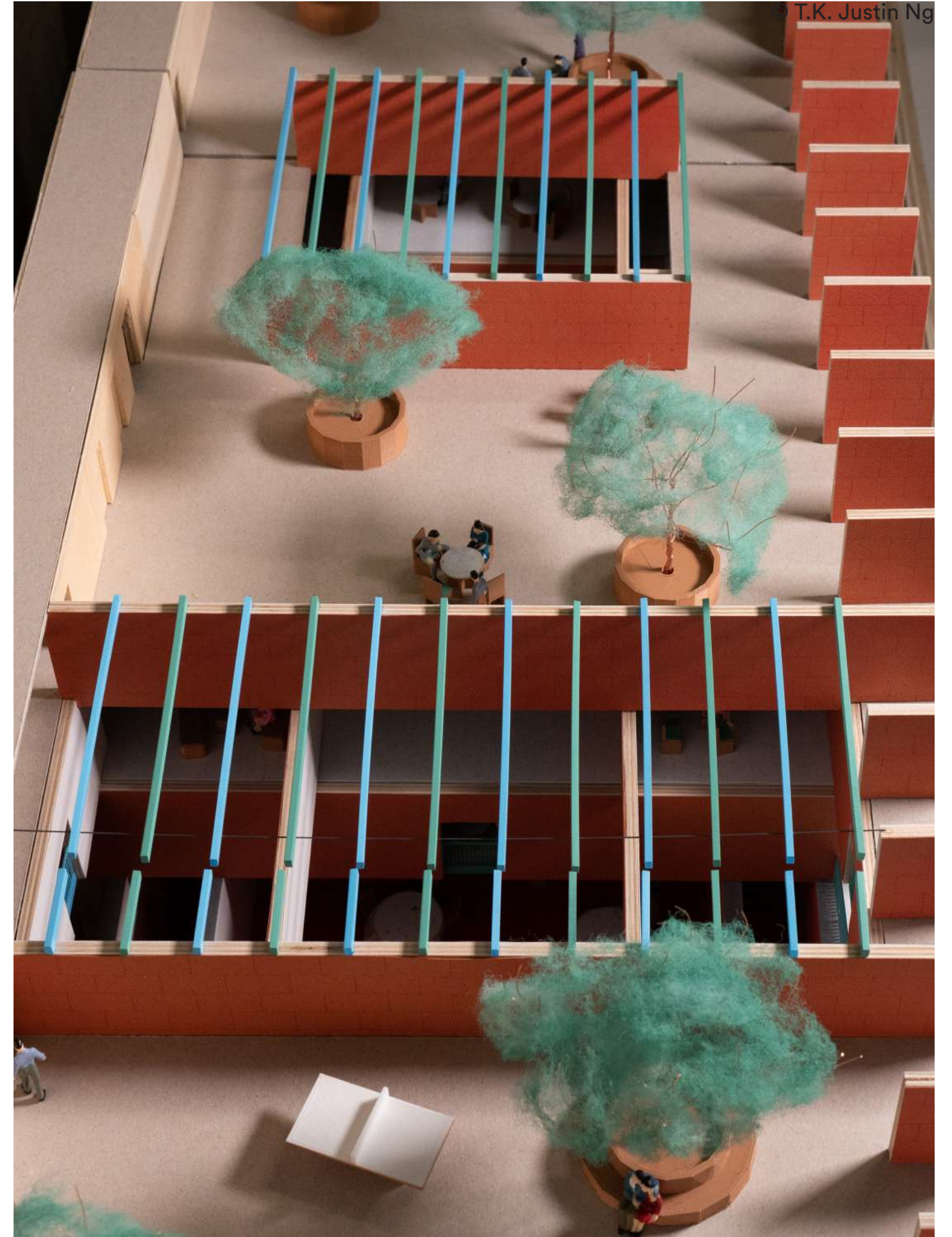
Third Floor Plan



Roof Plan

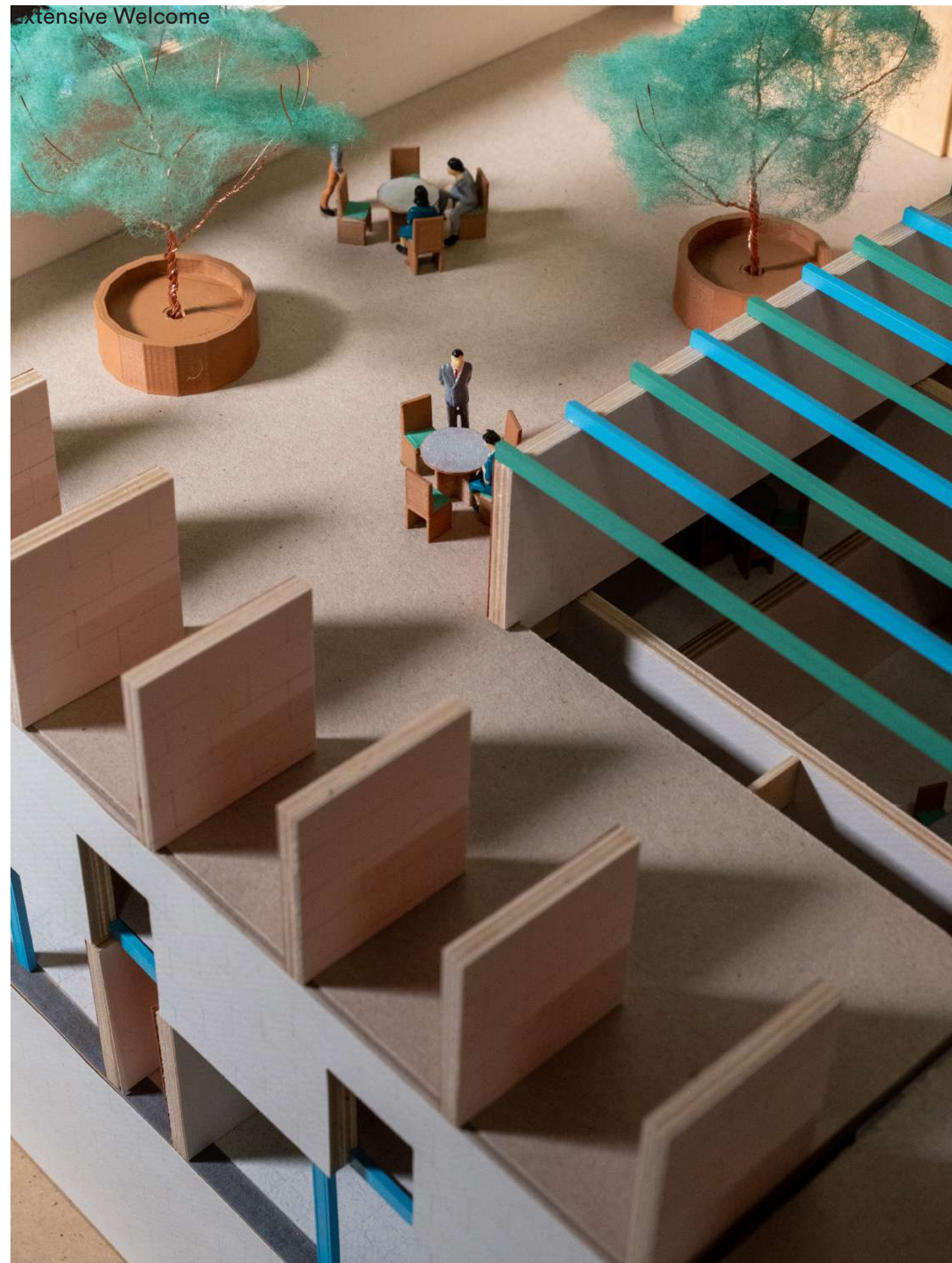


Extensive Welcome



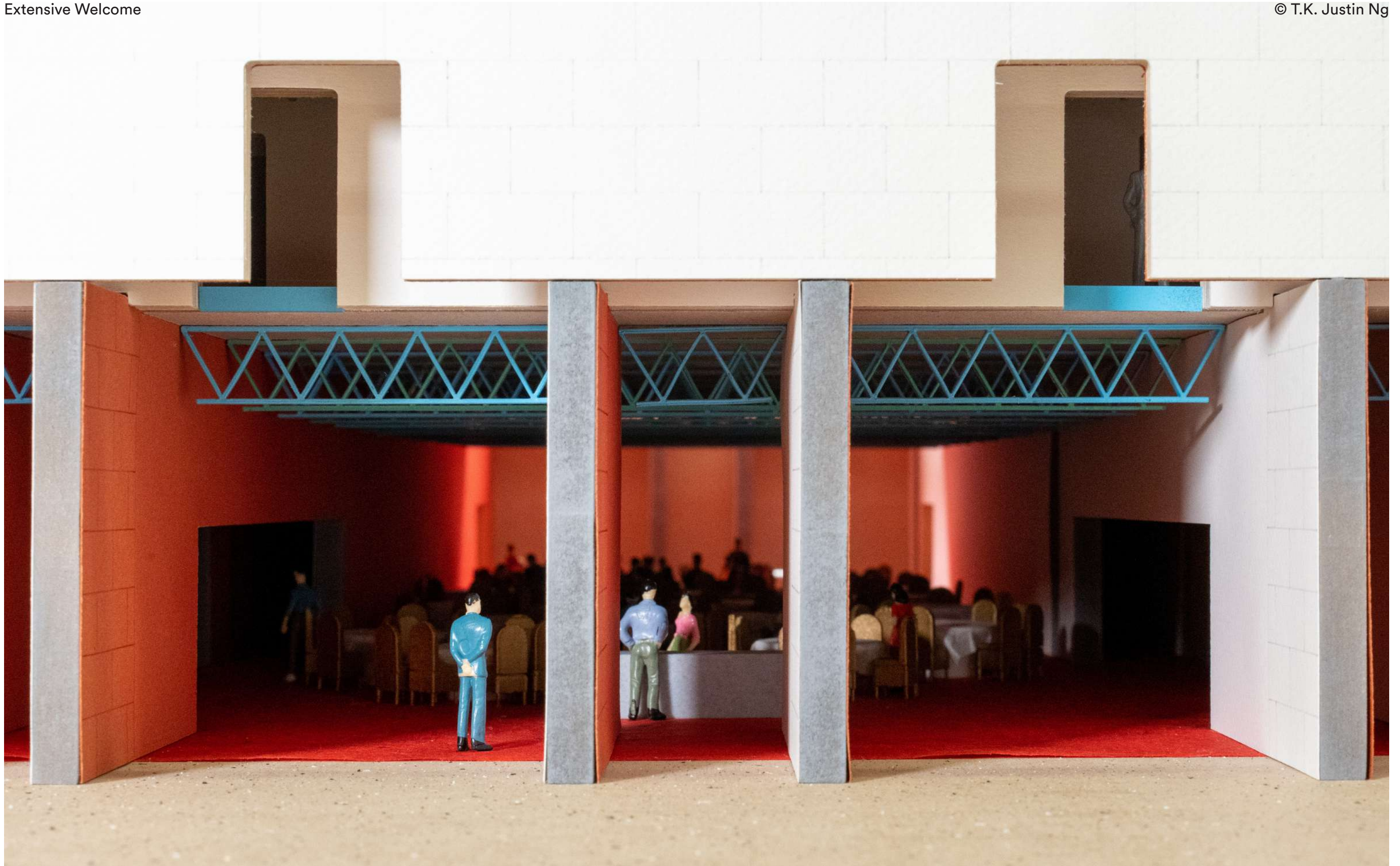
T.K. Justin Ng

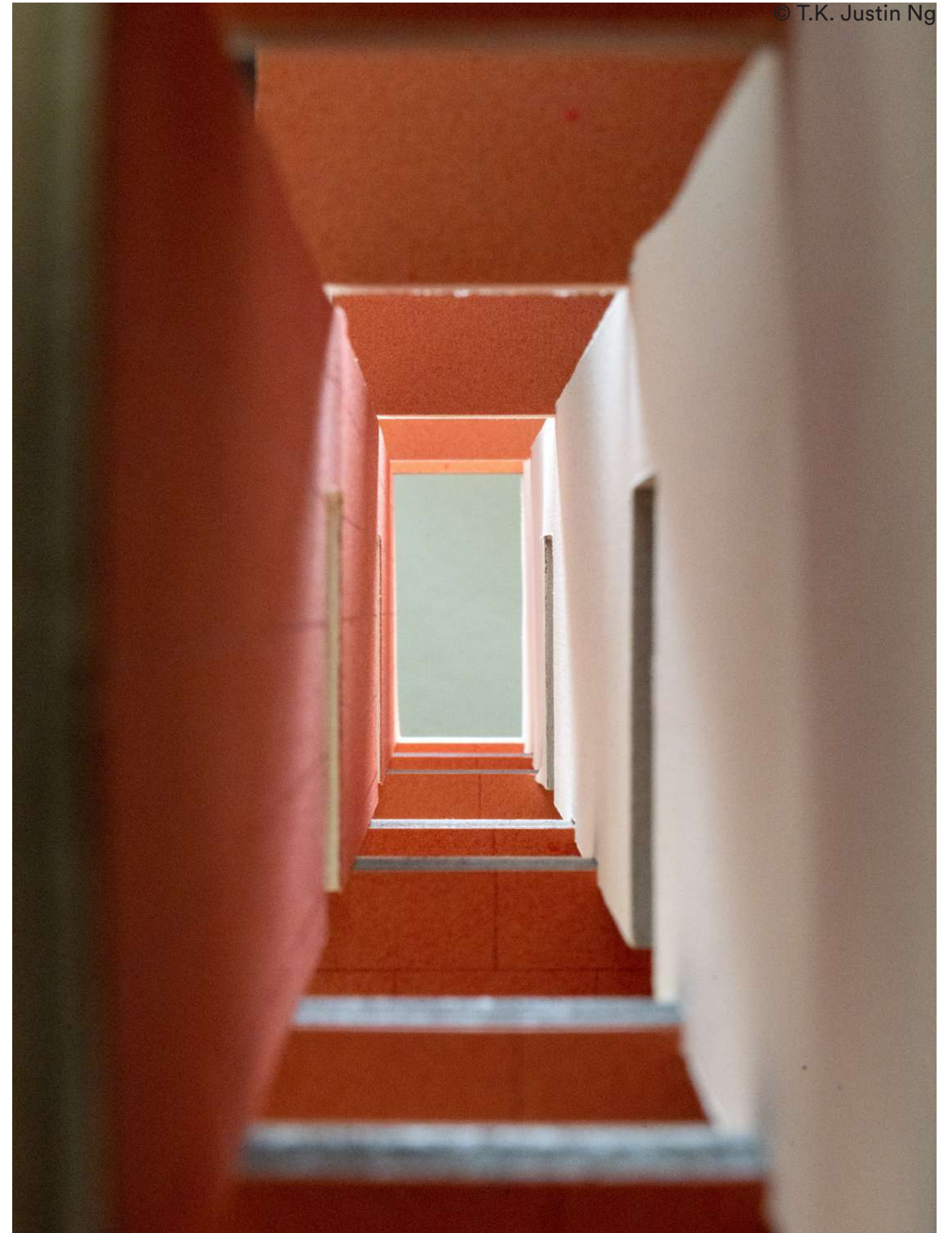
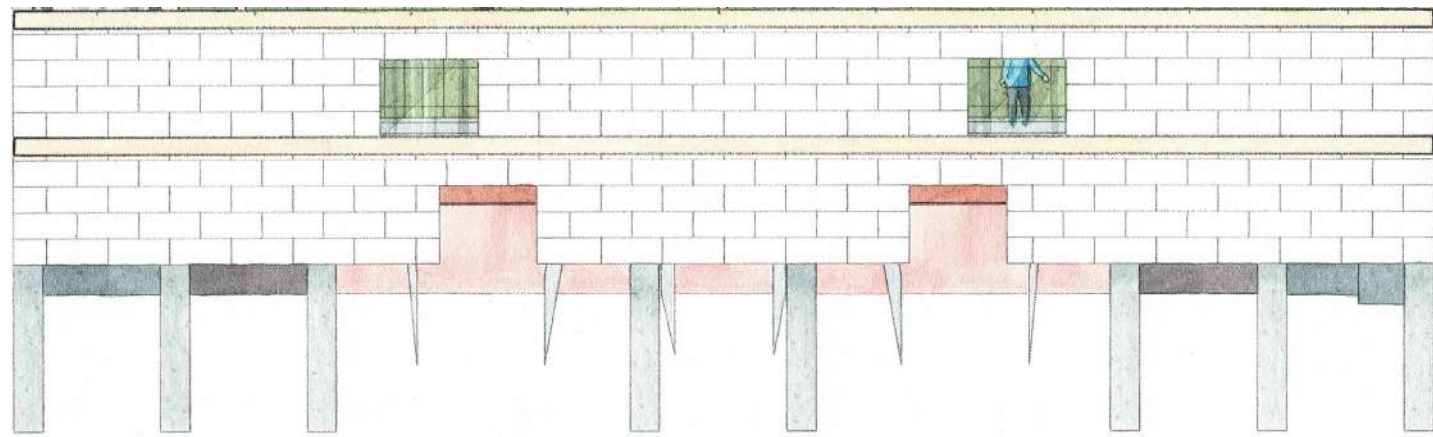
Extensive Welcome

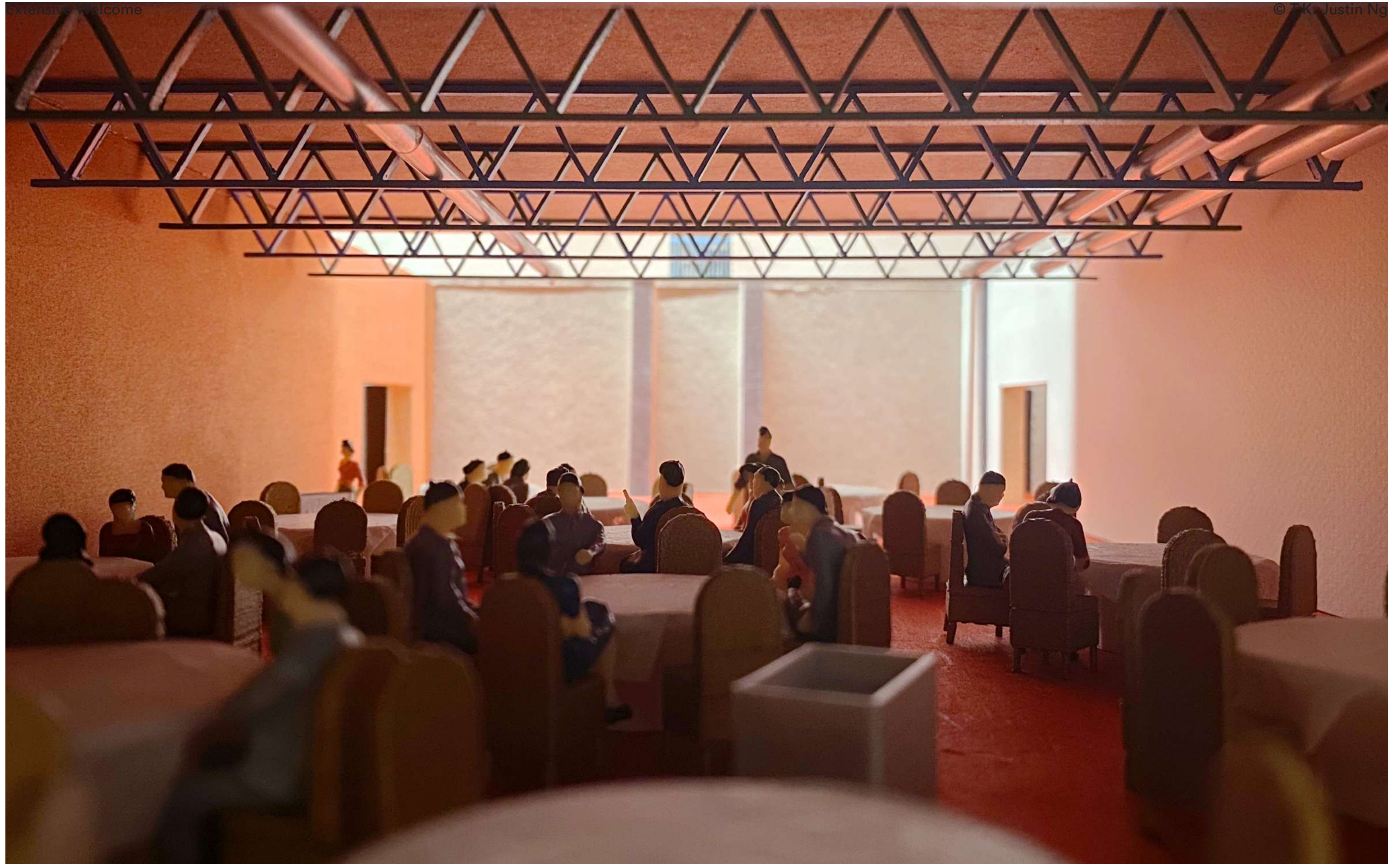


© T.K. Justin Ng

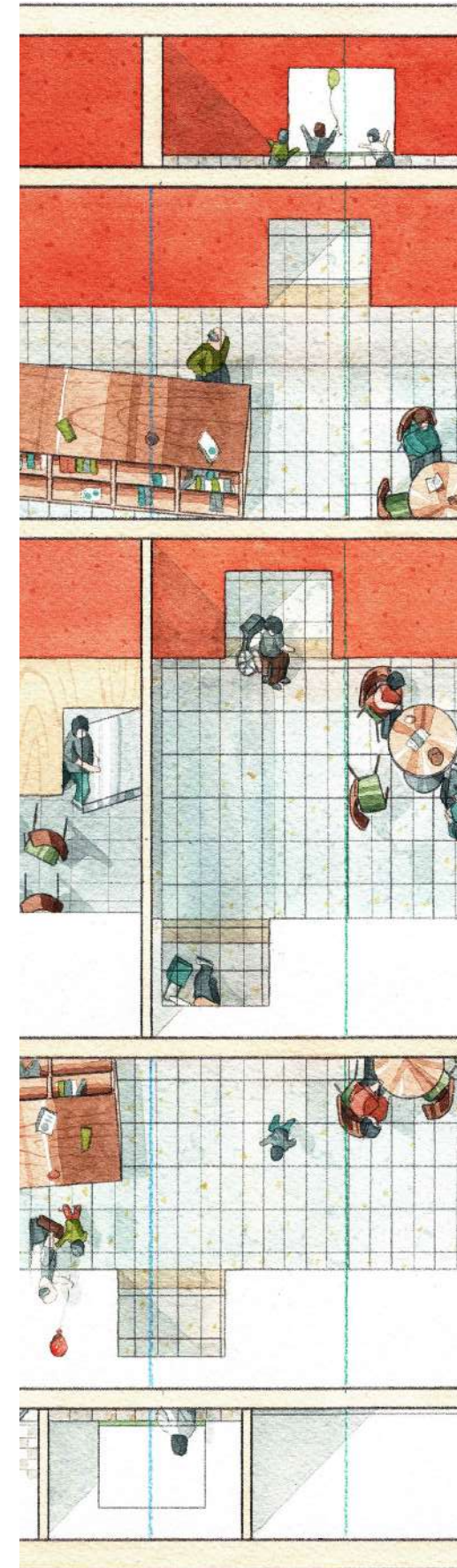
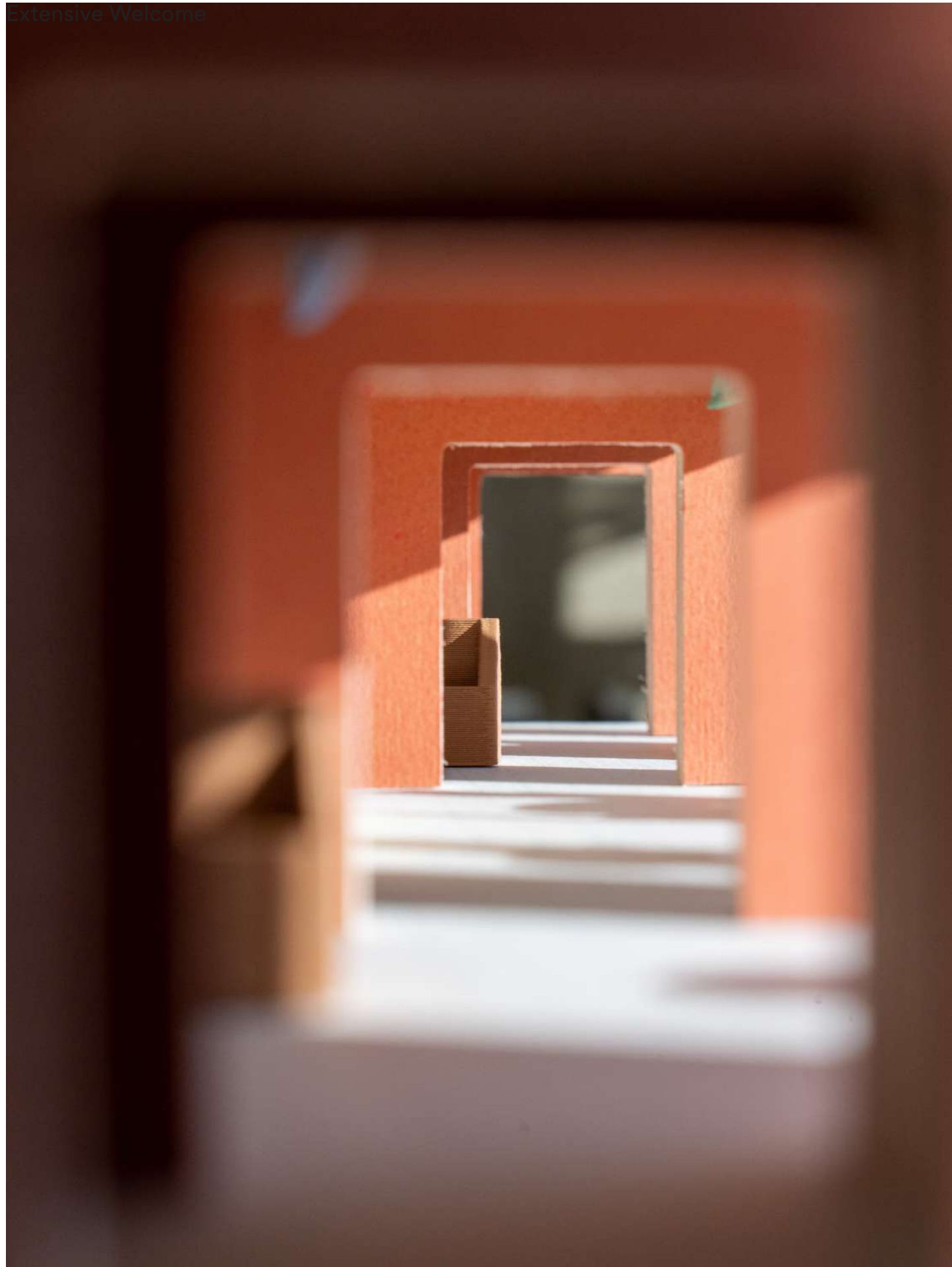




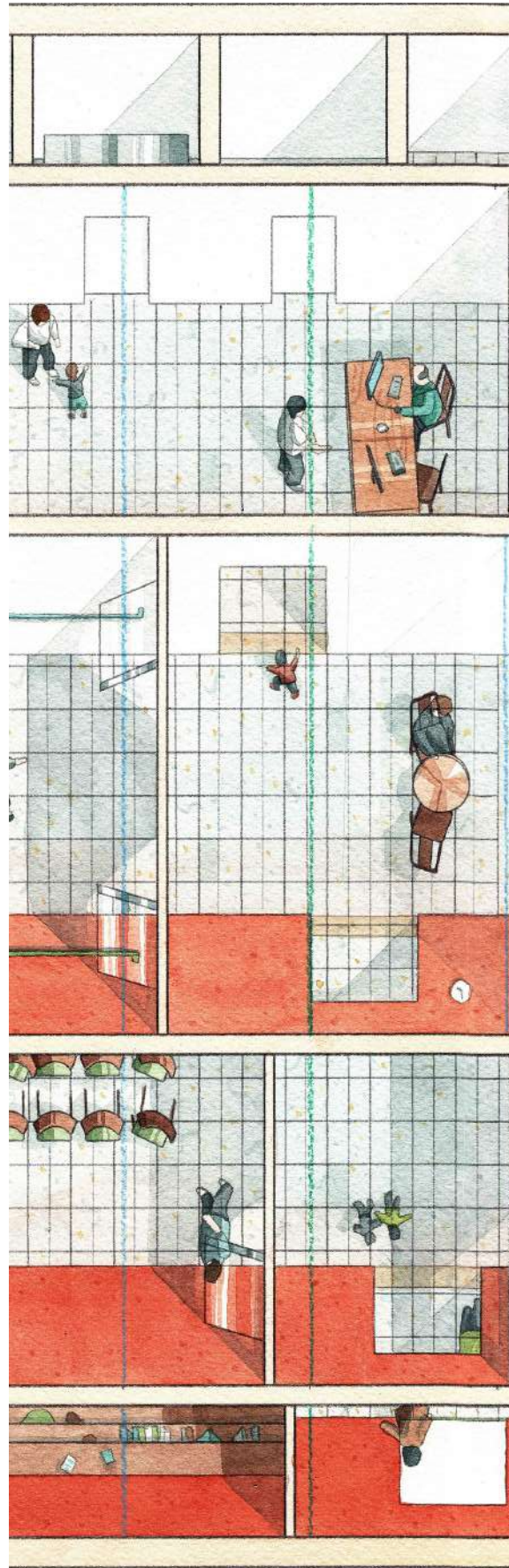


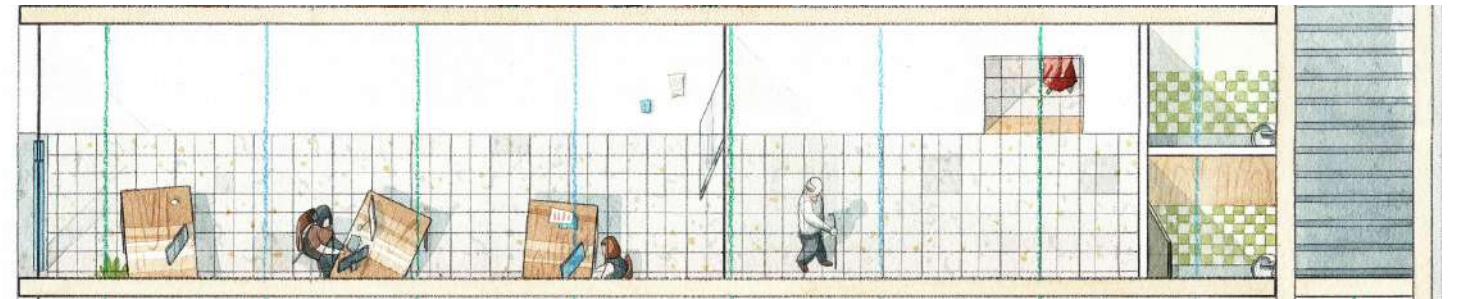
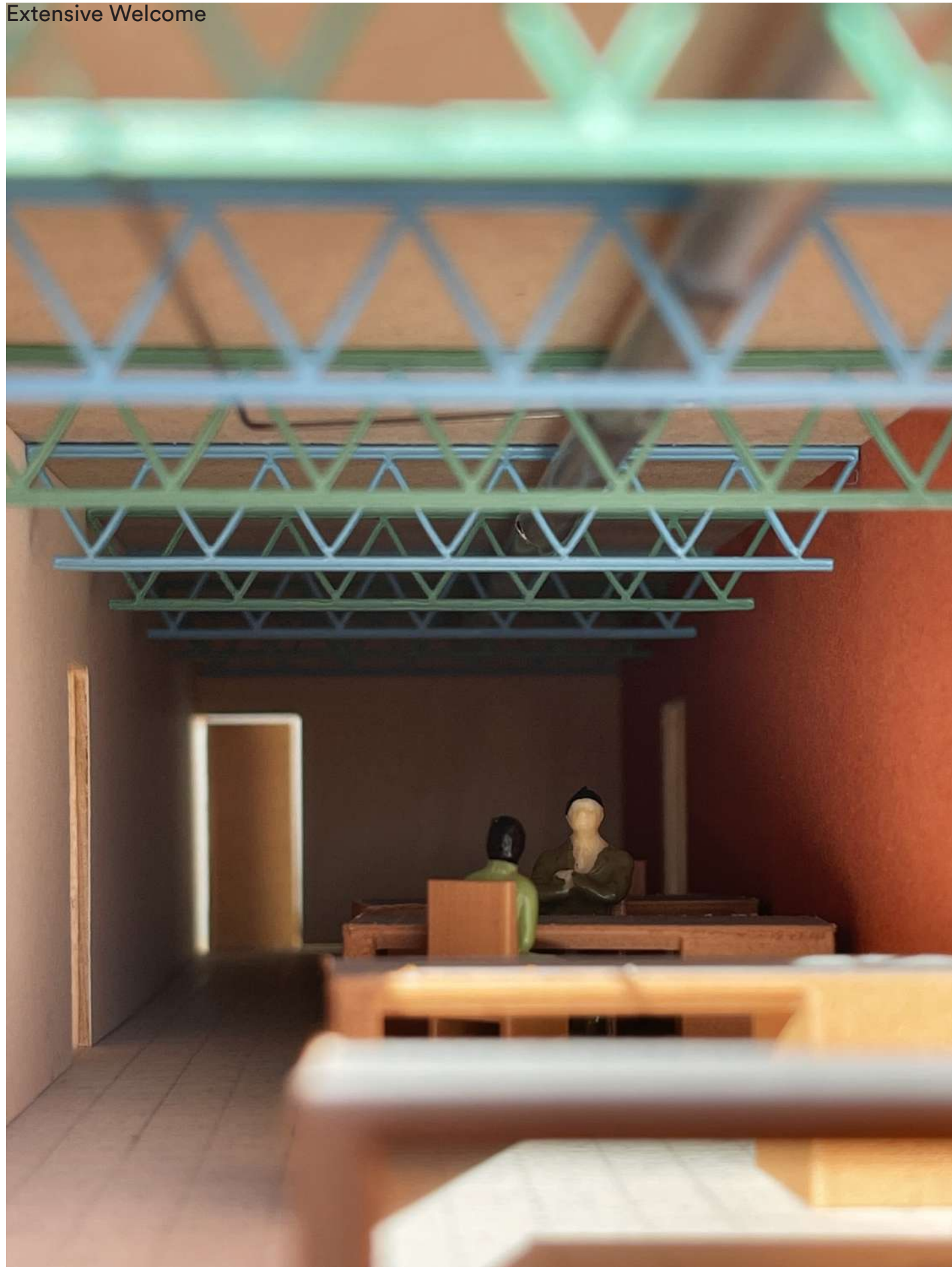


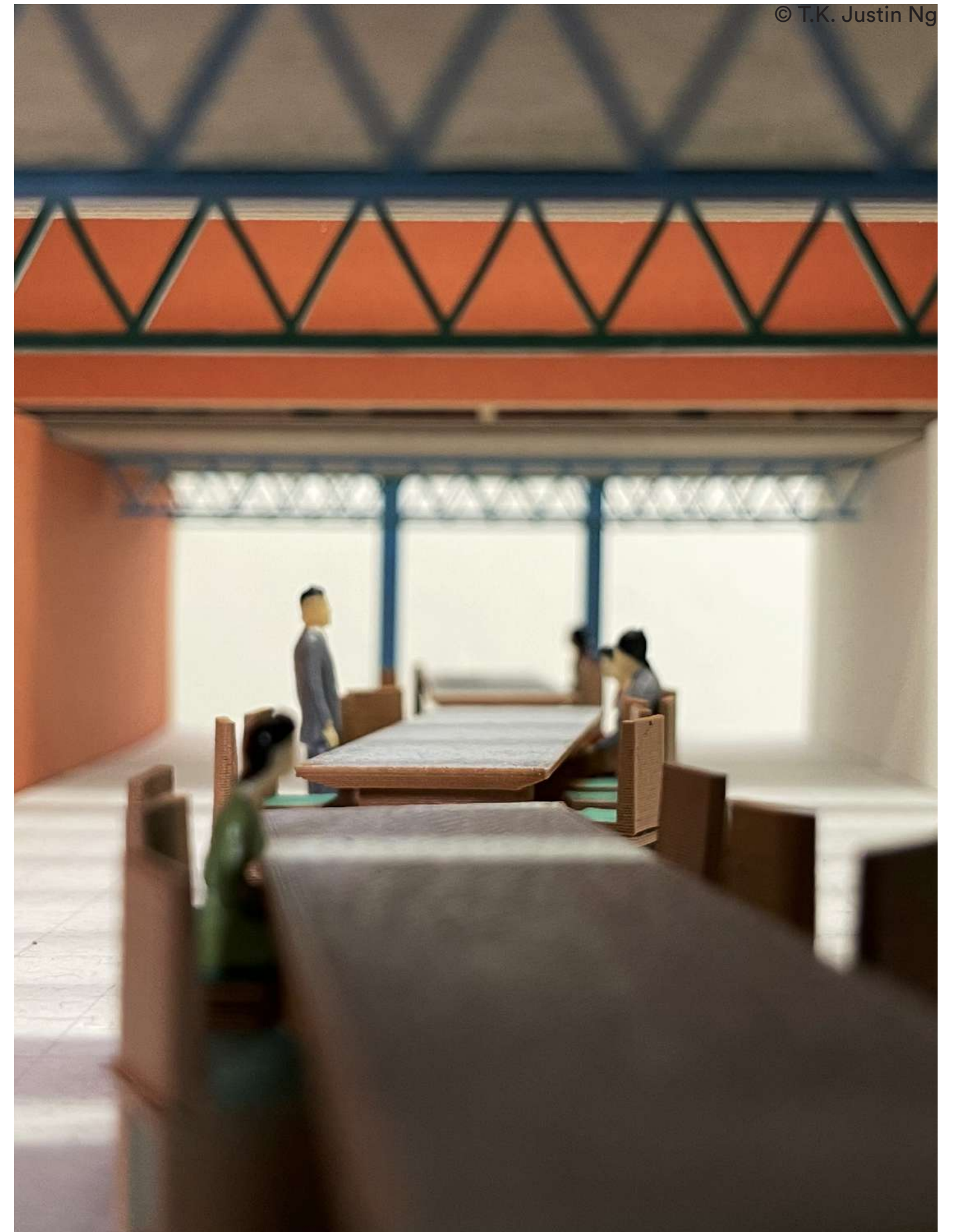
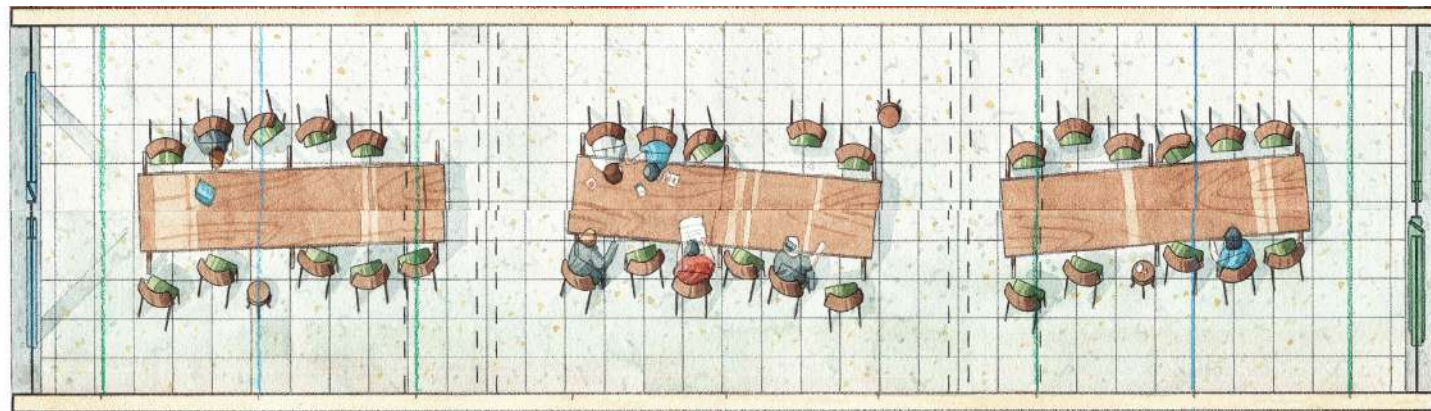




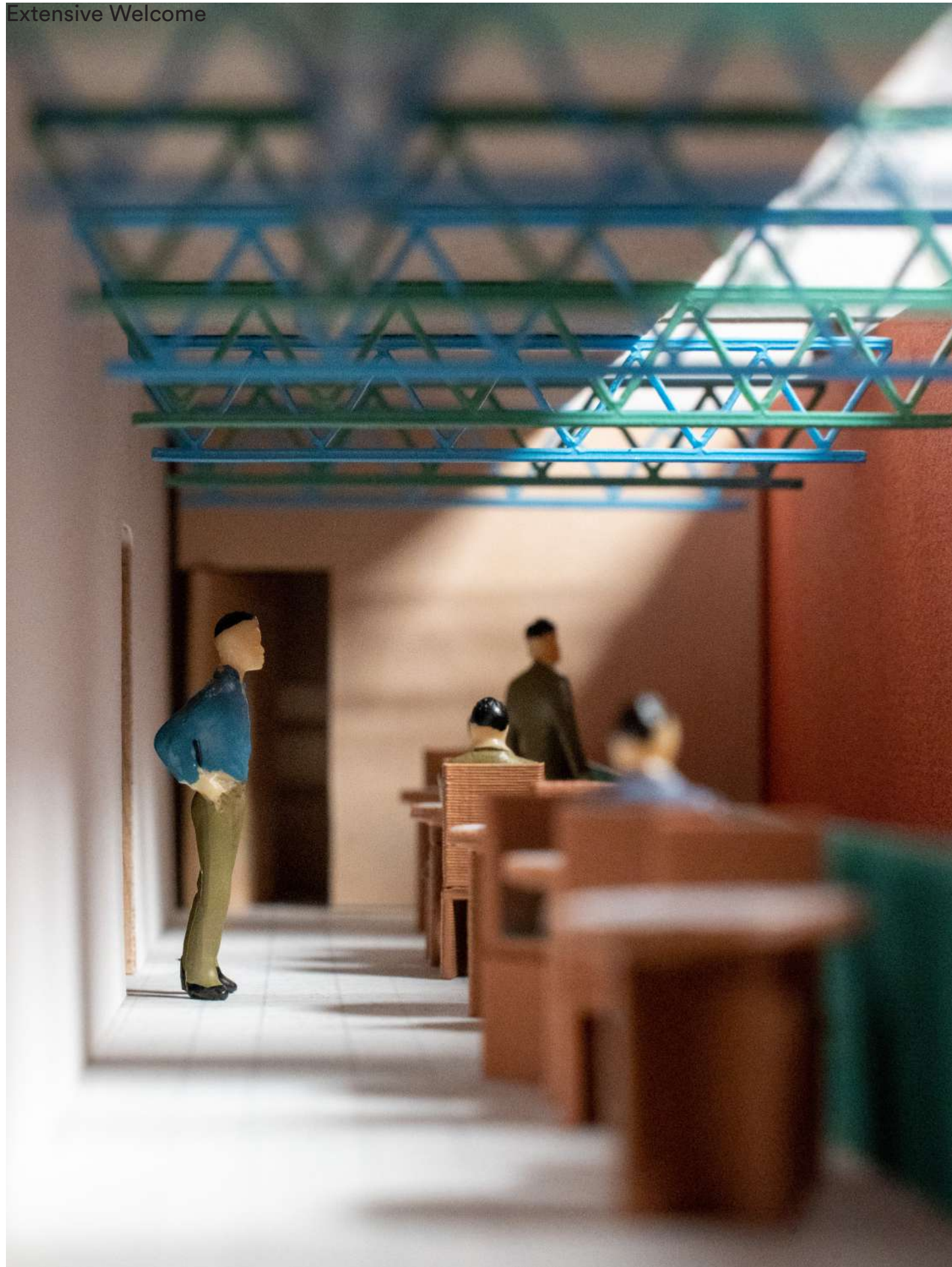
Extensive Welcome



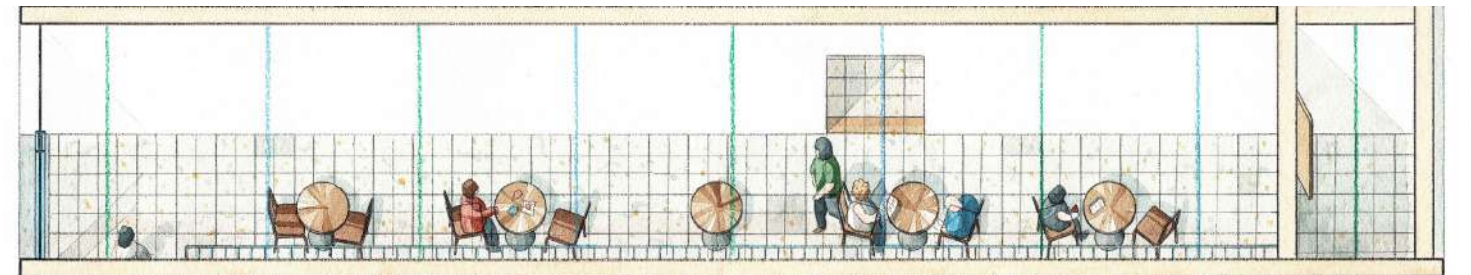




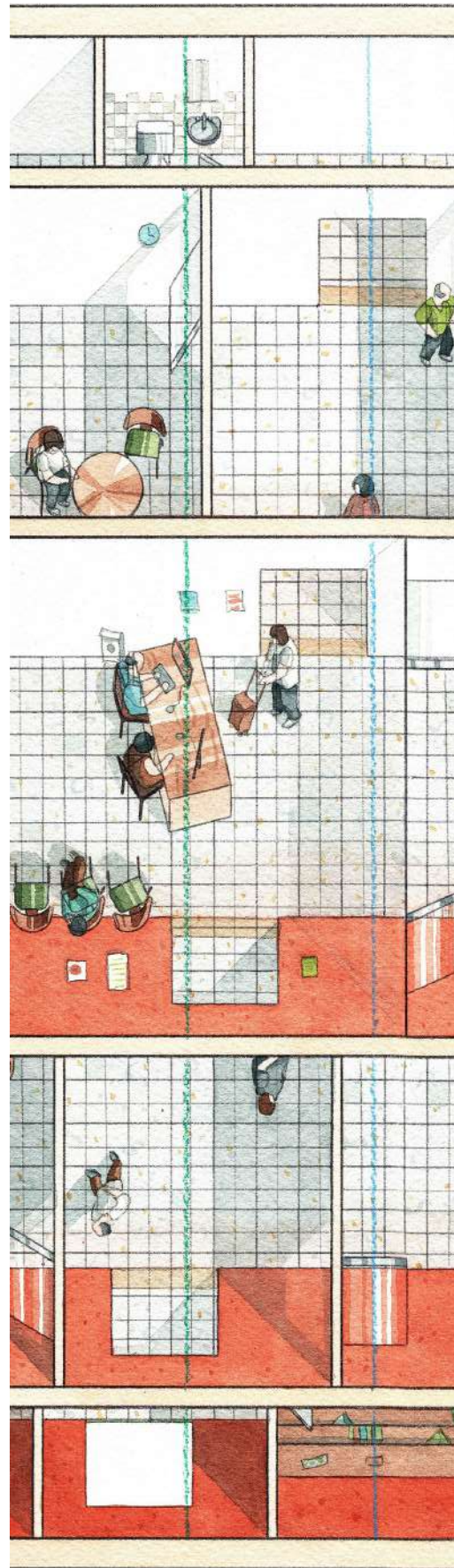
Extensive Welcome

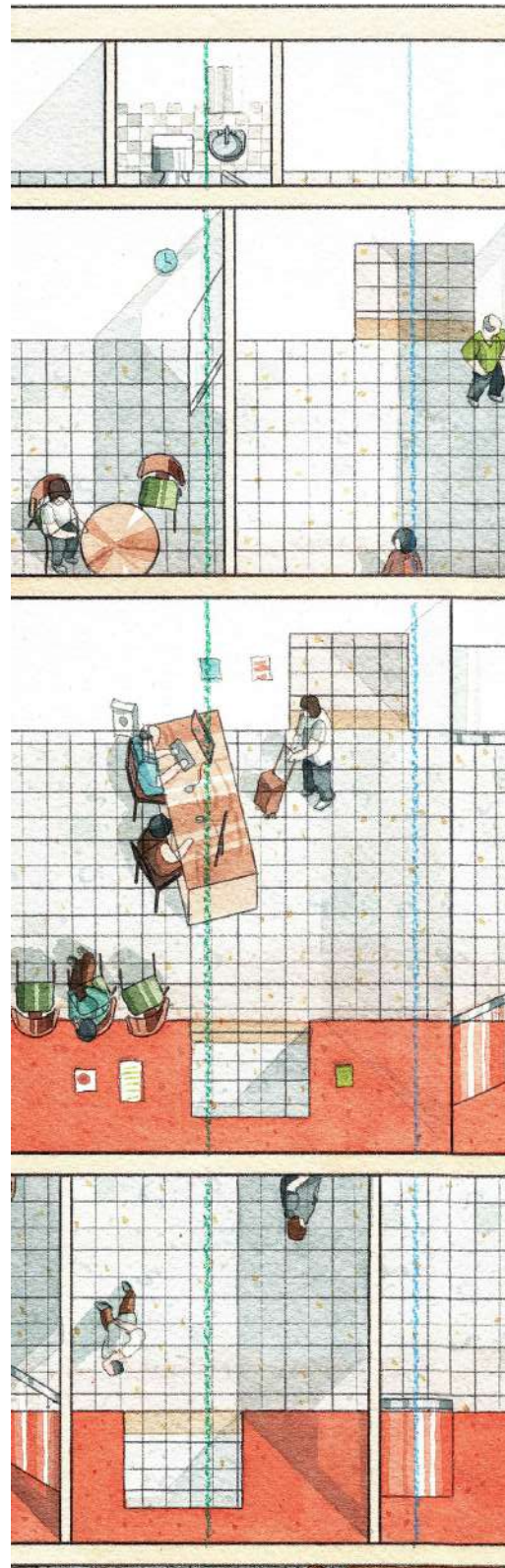


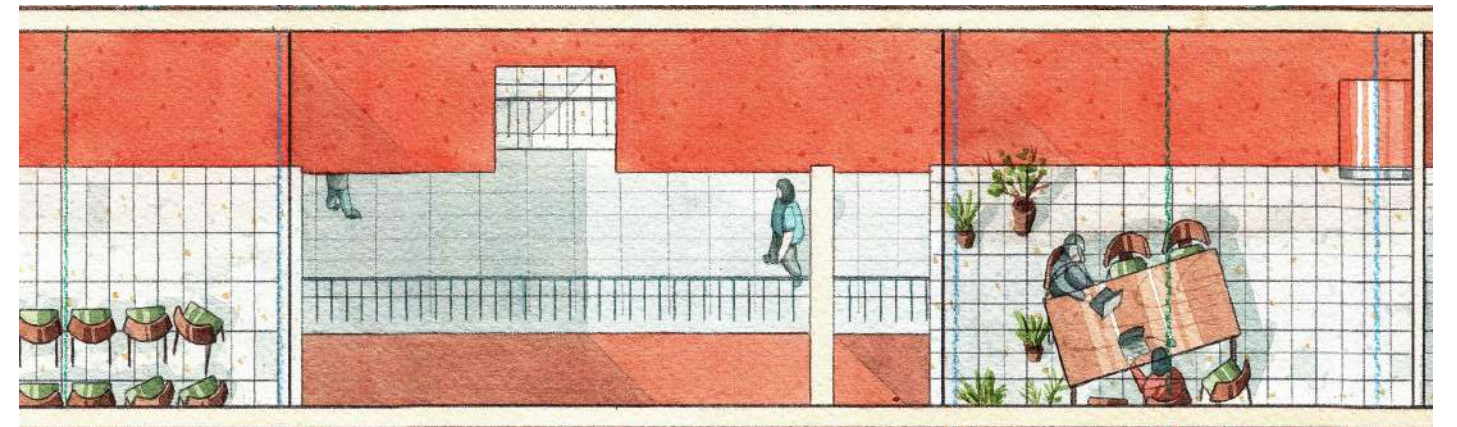
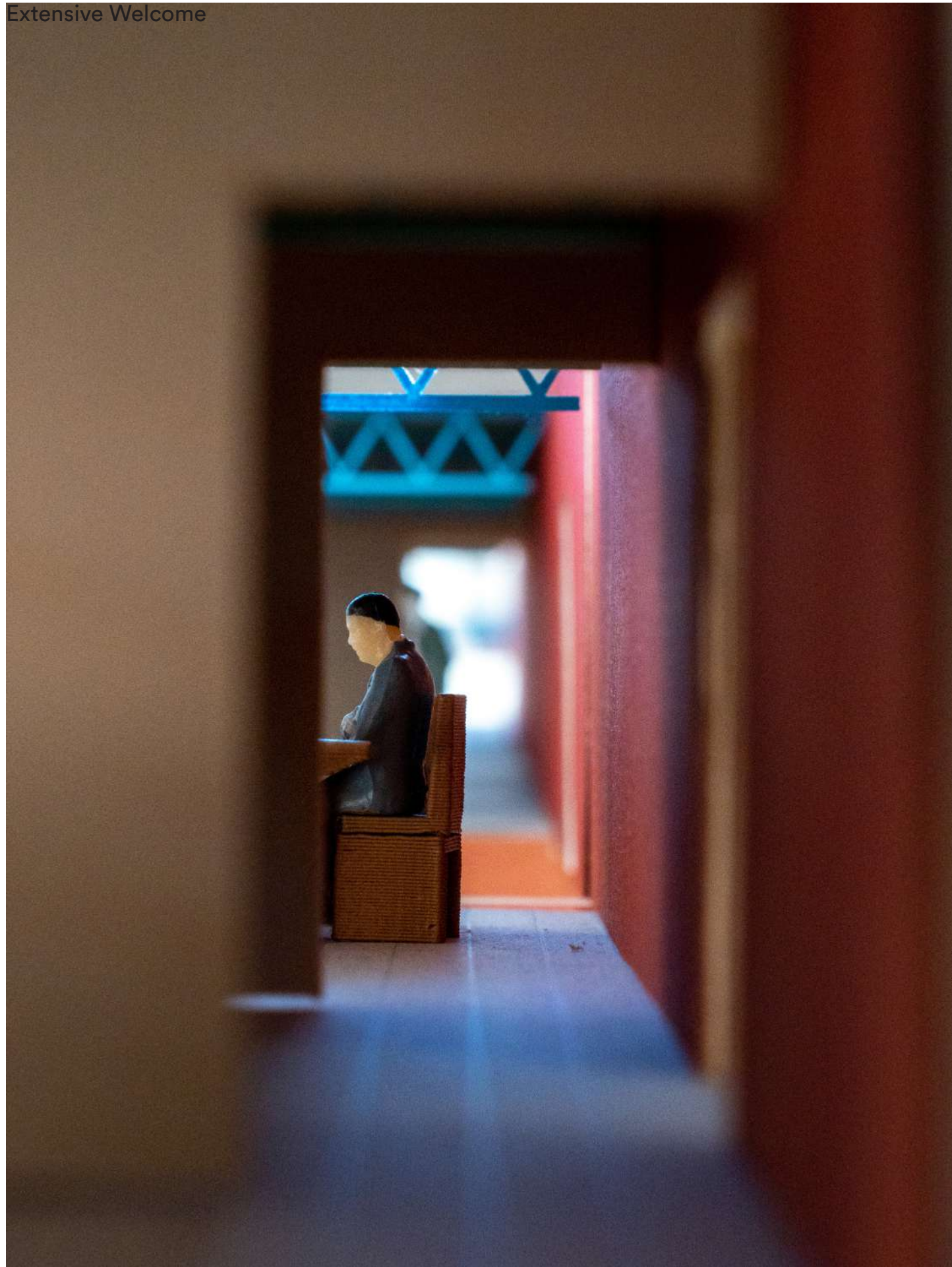
© T.K. Justin Ng



Extensive Welcome





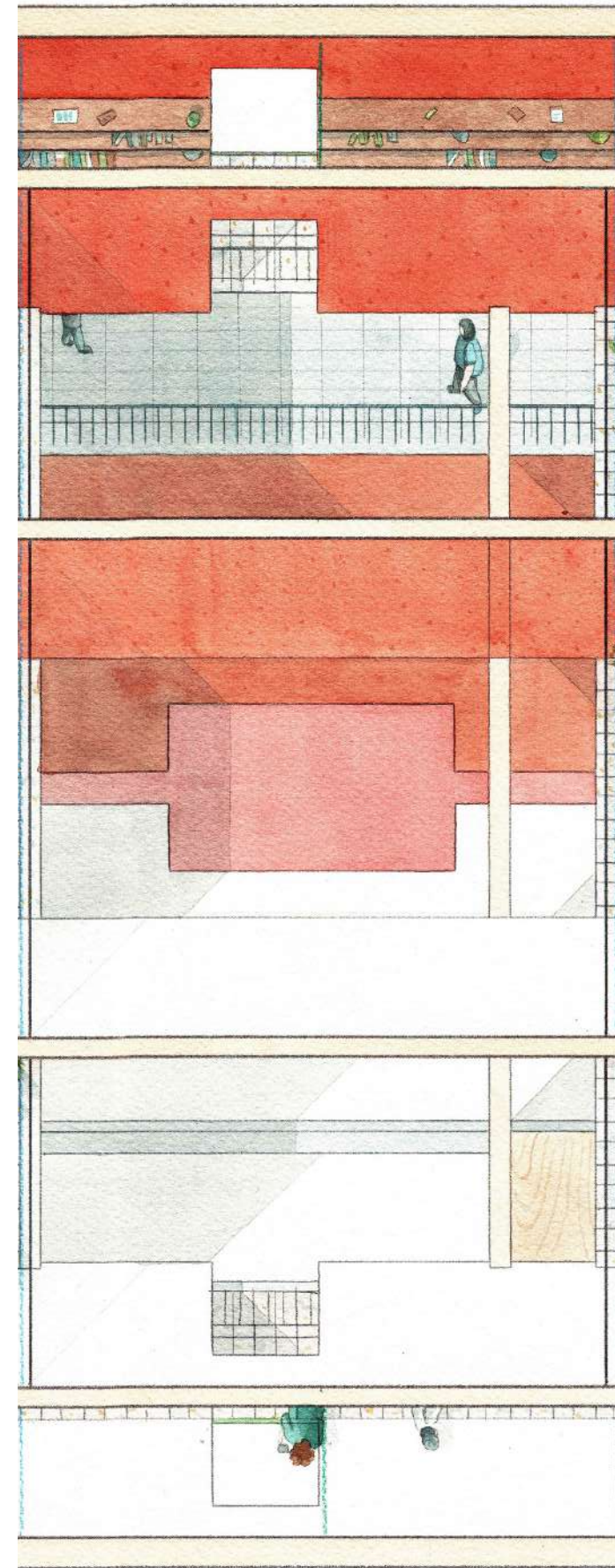


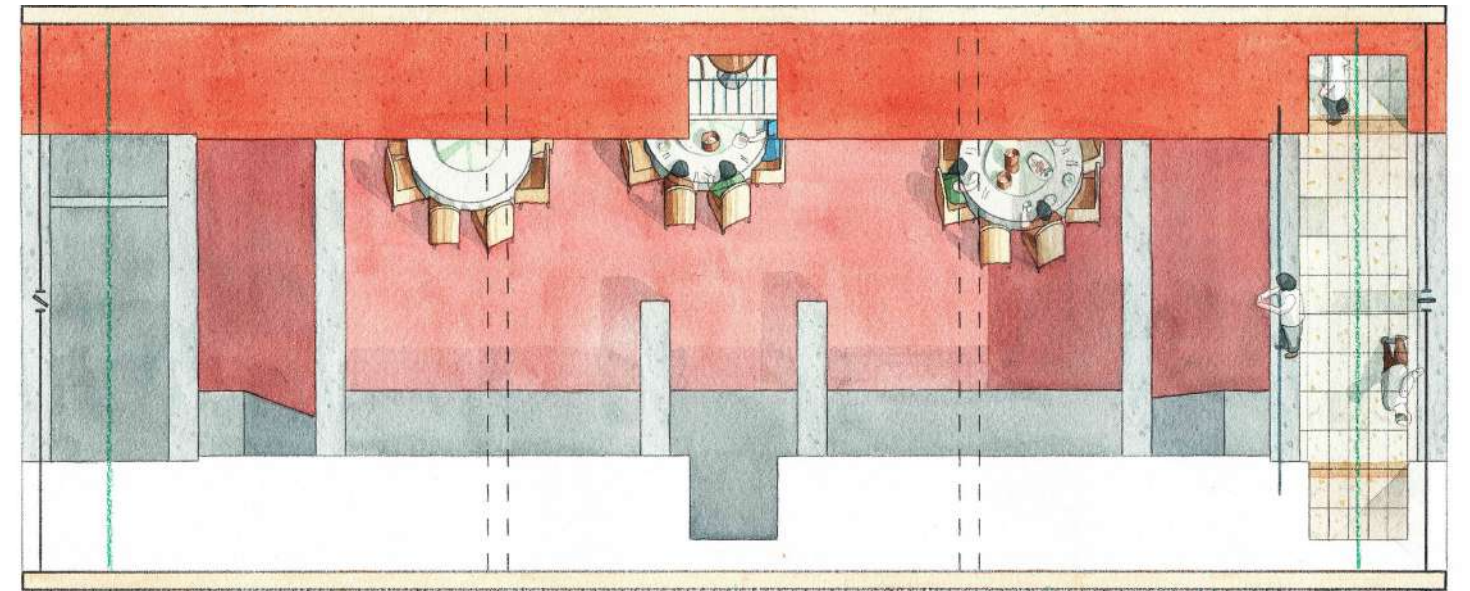
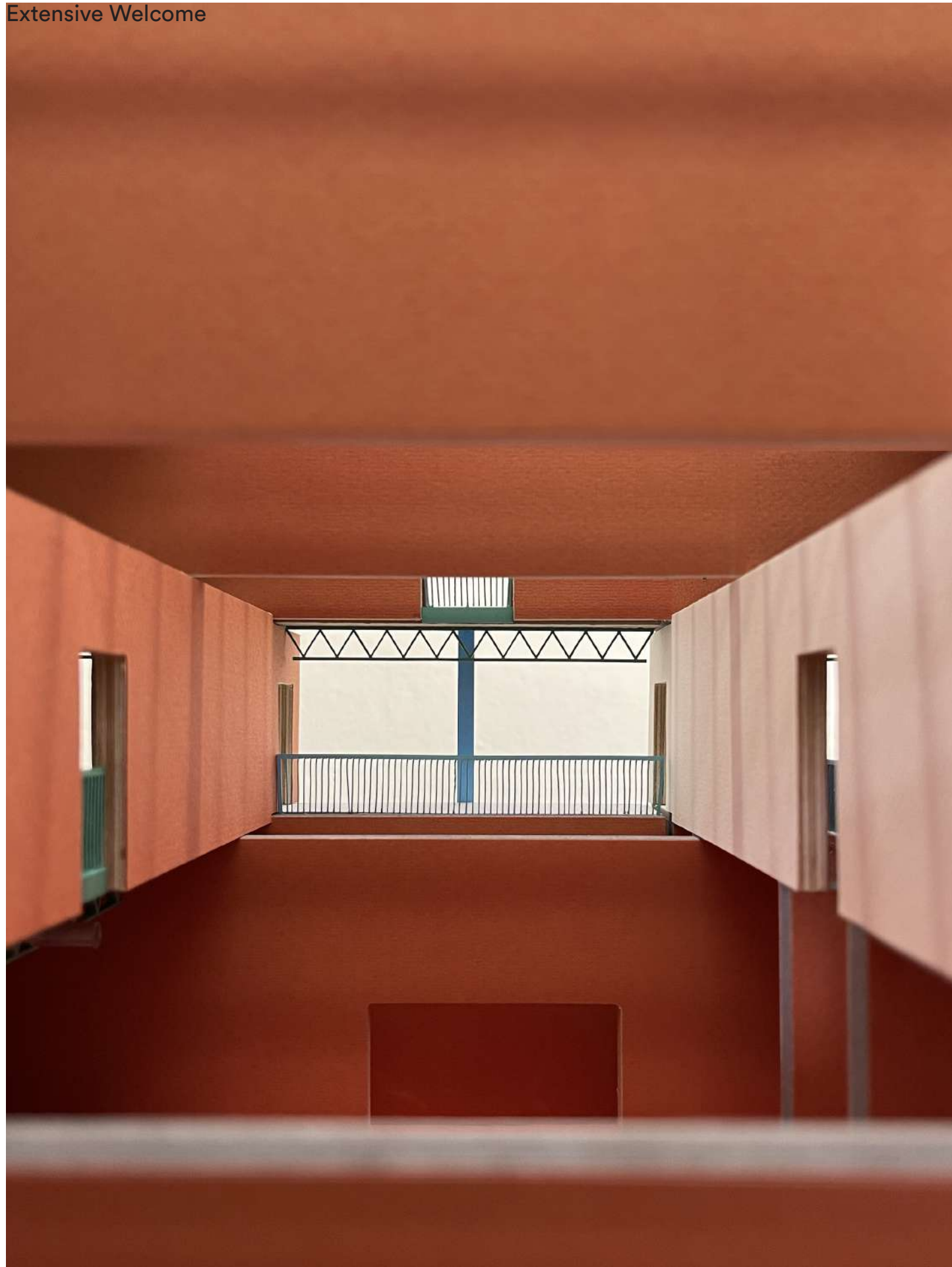


Extensive Welcome

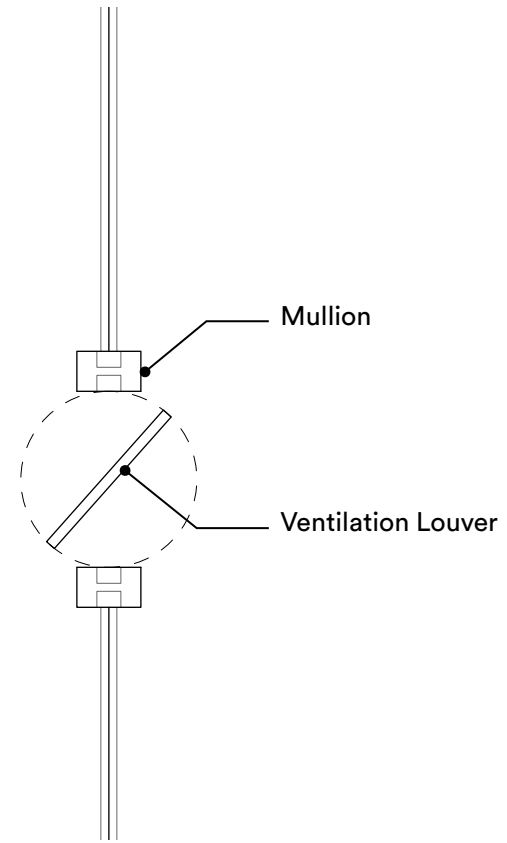


© T.K. Justin Ng

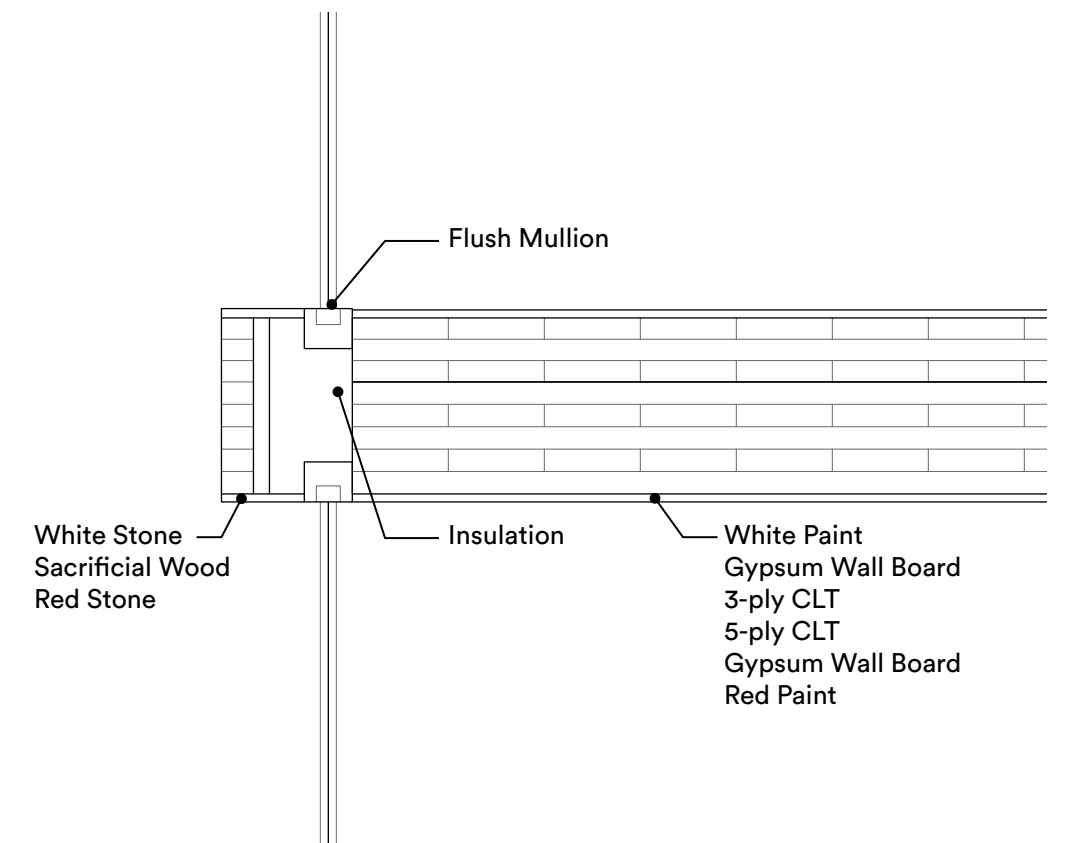




Extensive Welcome



Facade Detail



Facade Detail

Extensive Welcome



© T.K. Justin Ng

